

Khun

THONG LO SOI 12

by **yoo**
Inspired by
STARCK



BTS & SANSIRI JOINT VENTURE

Sansiri and BTS join hands in offering promising locations to bring you closer to a joyful life by connecting you with comfort and convenience.



Illustration by Jean Philippe Delhomme

WHO ARE yoo?

YOO is a global phenomenon delivering sophistication and style to landmark developments internationally. With visionary real estate entrepreneur John Hitchcox and world renowned designer Philippe Starck, this powerhouse has re-imagined residential, and hotel projects worldwide. Over the past two decades YOO has brought together some of the world's most creative minds who have been handpicked for their vision and artistry to redefine the spaces we live in, creating environments that are synonymous with luxury, quality and functionality. Supplying style with substance.



Creative director Philippe Starck and Chairman John Hitchcox

YOO have been involved in every aspect of design at KHUN by YOO from the project kick off and trips to gather inspiration to the interior design and furniture selection.





WELCOME TO KHUN BY YOO

The brand new condominium by Sansiri, located on Thong Lo soi 12, the heart of Bangkok's most celebrated neighborhood. KHUN by YOO, is Sansiri's first branded condominium with international design company YOO and brings luxury, convenience and extraordinary design to the most sought after and vibrant areas of Bangkok. Khun is ready to welcome YOO to Thong Lo.



LOCATION	: Thong Lo Soi 12, Sukhumvit 55
LAND AREA	: Approximately 1 Rai
PROJECT TYPE	: 27 Stories 1 building
TOTAL UNITS	: 148 Units

UNIT TYPE		UNIT AREA (SQ.M)
1 Bedroom	1 Bathroom	41.50 - 53.50
2 Bedrooms	2 Bathrooms	82.00 - 97.75
3 Bedrooms	2 Bathrooms	139.25 - 149.75
Penthouses		294.00 - 302.75

FACILITIES & SERVICES

- All common areas and residential units designed by YOO inspired by Starck
- Heated Fibre Optic Swimming Pool with 180 Degree city view with Jacuzzi and Kid's Pool
- Steam Room (Male/Female)
- Rooftop Garden covering approximately 500 square metres
- Mechanical Parking
- Valet Parking
- Fitness Room with World Class Equipment
- Lounge
- Bang & Olufsen equipped screening room
- Game Room
- Electric Vehicle Charging Station
- Wireless Internet available throughout communal areas
- Concierge Service
- 24-hour Security and CCTV



THE DROP OFF

KHUN OUTSTANDINGLY DIFFERENT

Reflect your individuality through architecture and design. Inspired by the industrial heritage and the distinctive lifestyle of Thong Lo, KHUN by YOO incorporates outstanding creativity and opulent amenities that promise to deliver an incomparable place to call home. With a copper core running through the heart of the building, flashes of raw concrete and encased in full height insulated glass, the design gives the façade a distinctive, elegant and luxurious appearance.



THE LOBBY

SUMPTUOUS INTERIORS

The lobby at KHUN by YOO is full of surprises. Against the backdrop of marble and intricately embellished raw concrete, the carefully selected furniture and design pieces set the tone for the interiors of this prestigious project.

THE WOW FACTOR

In a world where first impressions are everything, the entrance at KHUN is sure to make an impact; suspended above you, Barovier and Tosso chandelier sets the tone of what's to come.



ROOF TOP, PENTHOUSE AND SWIMMING POOL LEVELS

KHUN IS RAISED UP

Get the ultimate work out with a view. The gym at KHUN by YOO is furnished with state-of-the-art Technogym equipment and provides the ideal place to exercise with stunning views of the city as a backdrop. Not in the mood for burning calories? Then why not invite friends over to play pool or watch a movie in the YOO inspired by Starck designed games room and Bang and Olufsen equipped cinema room, before venturing out to enjoy the vibrant nightlife Thong Lo has to offer.



SWIMMING POOL ON THE 24TH FLOOR

FLOAT AMONGST THE STARS

YOO inspired by Starck has transformed the 30-metre infinity pool into the night's sky by installing fibre optic lights under the water and surrounding the alfresco space with Philippe Starck designed wall lamps. Floating on the 24th floor, the swimming pool and Jacuzzi's indulge residents with 180 degree views of the city scape below.

MAKE YOURSELF AT HOME

YOO inspired by Starck have designed every corner of KHUN by YOO with a focus on you. The aim being to bring good design into the home and to make it elegant, intelligent and accessible. The living room and balcony have been seamlessly designed making the most out of the space. The striking marble bathrooms are fitted with top of the range sanitary ware from brands such as Axor and Duravit, with every apartment housing a bath and Hansgrohe rain shower.



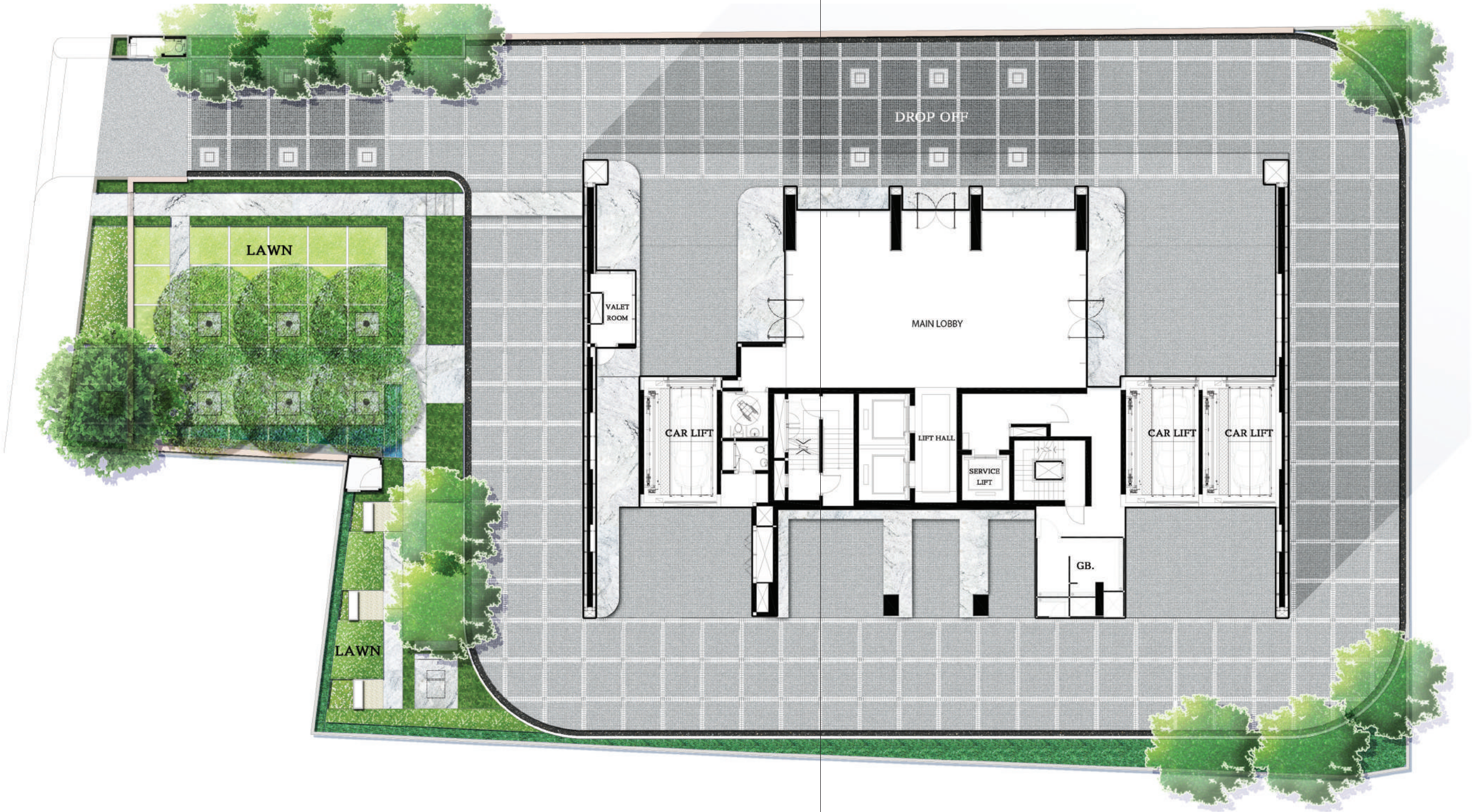
THE GAMES ROOM



THE CINEMA ROOM

FLOOR PLAN

MASTER PLAN



REMARK

The layout and size of the common areas identified herein and in other sales related documents may vary as deemed appropriate, without compromising the overall function and use.

6-10th FLOOR



22-23rd FLOOR



11-21st FLOOR



24th FLOOR



REMARK

The layout and size of the common areas identified herein and in other sales related documents may vary as deemed appropriate, without compromising the overall function and use.

25th FLOOR



27th FLOOR



26th FLOOR



REMARK

The layout and size of the common areas identified herein and in other sales related documents may vary as deemed appropriate, without compromising the overall function and use.

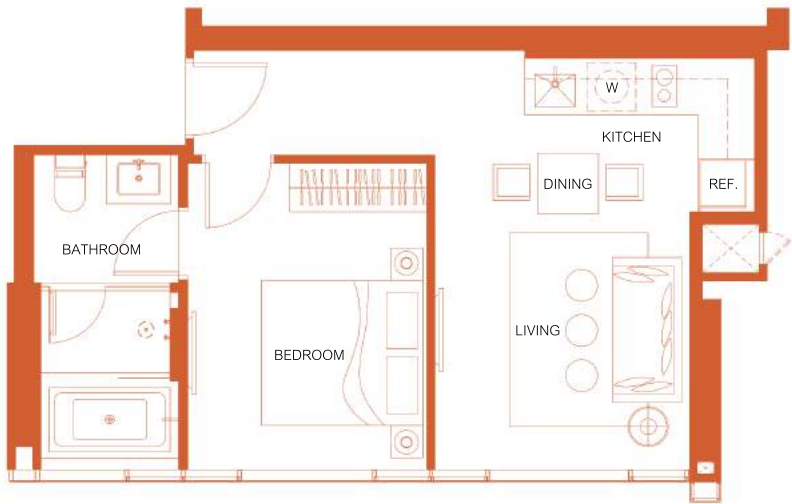
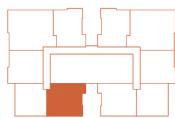
ROOM LAYOUT

ROOM LAYOUT



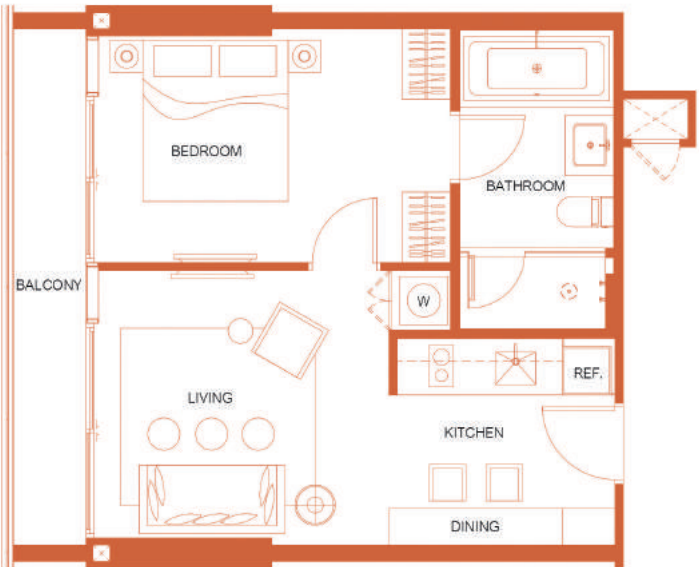
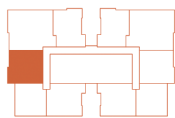
1A

41.50 SQ.M



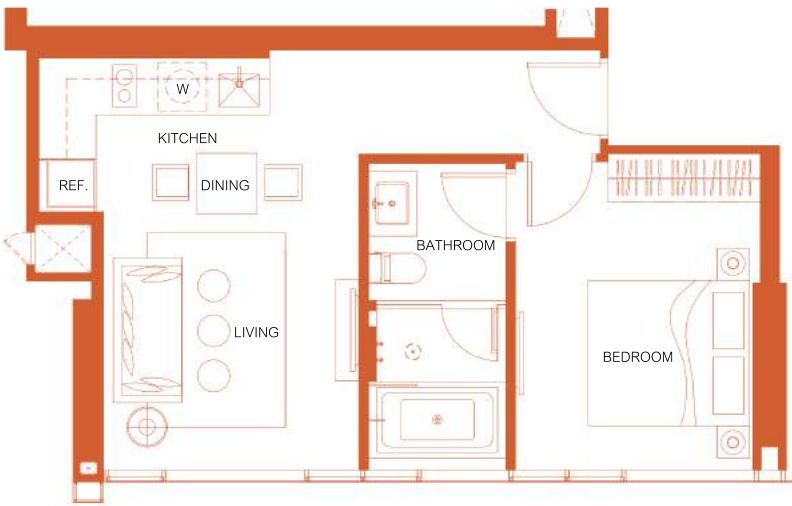
1B

48.75 SQ.M



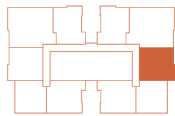
1Am

41.50 SQ.M



1Bm

48.75 SQ.M



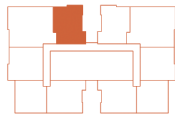
REMARK

The layout and size of the common areas identified herein and in other sales related documents may vary as deemed appropriate, without compromising the overall function and use.

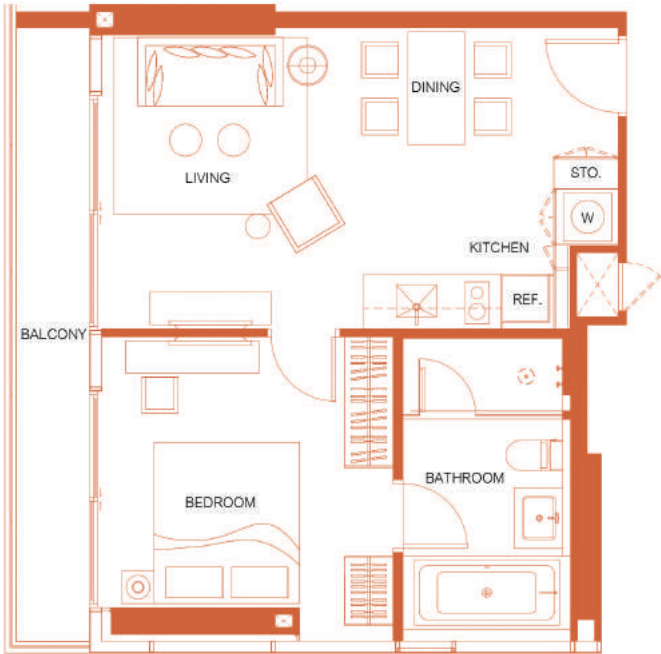
ROOM LAYOUT



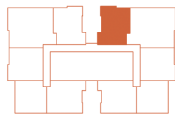
1C
49.75 SQ.M



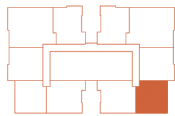
1D
53.50 SQ.M



1Cm
49.75 SQ.M



1Dm
53.50 SQ.M



REMARK

The layout and size of the common areas identified herein and in other sales related documents may vary as deemed appropriate, without compromising the overall function and use.

ROOM LAYOUT



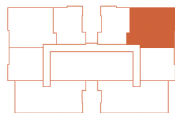
2A

82.00 SQ.M



2Am

82.00 SQ.M



2B

97.75 SQ.M



2Bm

97.75 SQ.M



REMARK

The layout and size of the common areas identified herein and in other sales related documents may vary as deemed appropriate, without compromising the overall function and use.

ROOM LAYOUT



3A

139.25 SQ.M



3Am

139.25 SQ.M



3B

149.75 SQ.M



3Bm

149.75 SQ.M



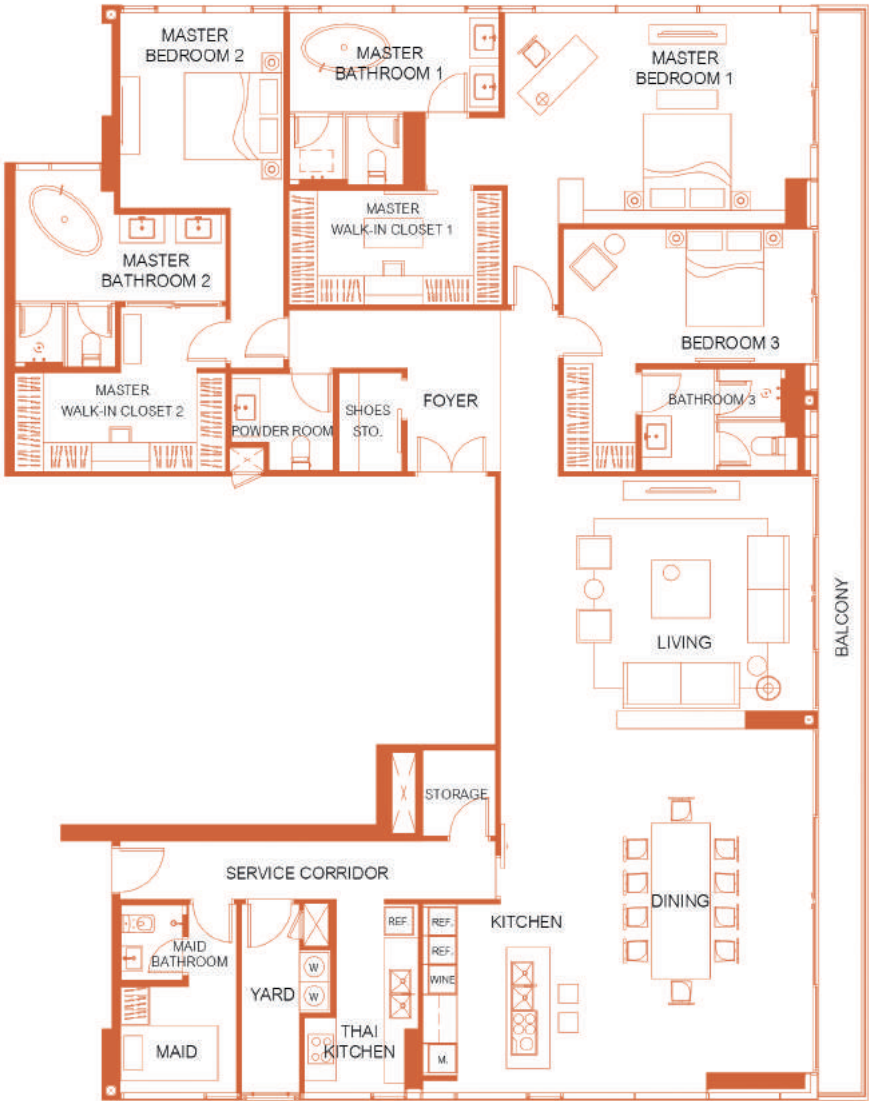
REMARK

The layout and size of the common areas identified herein and in other sales related documents may vary as deemed appropriate, without compromising the overall function and use.

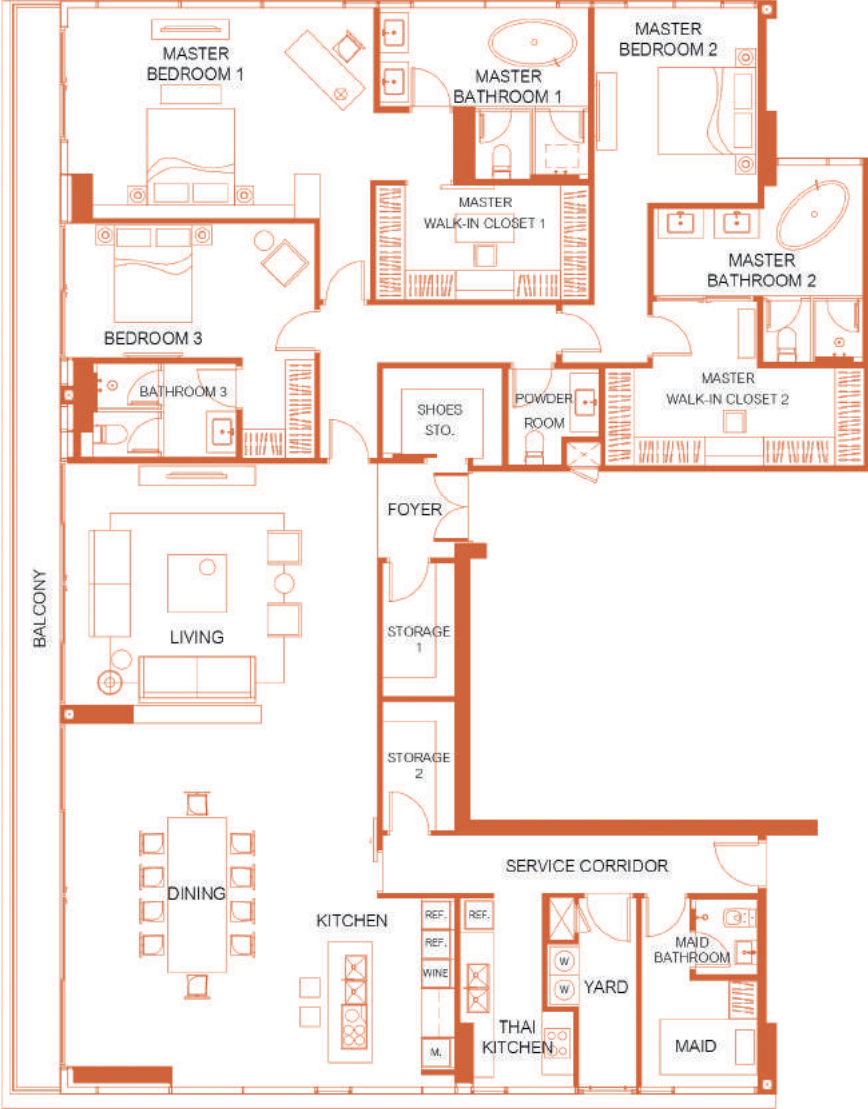
ROOM LAYOUT



PH1
294.00 SQ.M



PH2
302.75 SQ.M



REMARK

The layout and size of the common areas identified herein and in other sales related documents may vary as deemed appropriate, without compromising the overall function and use.



+66 (0)2 201 3999
sansiri.com