



THE
muVE
RAM 22

“Every MUVE caters to your passion.”



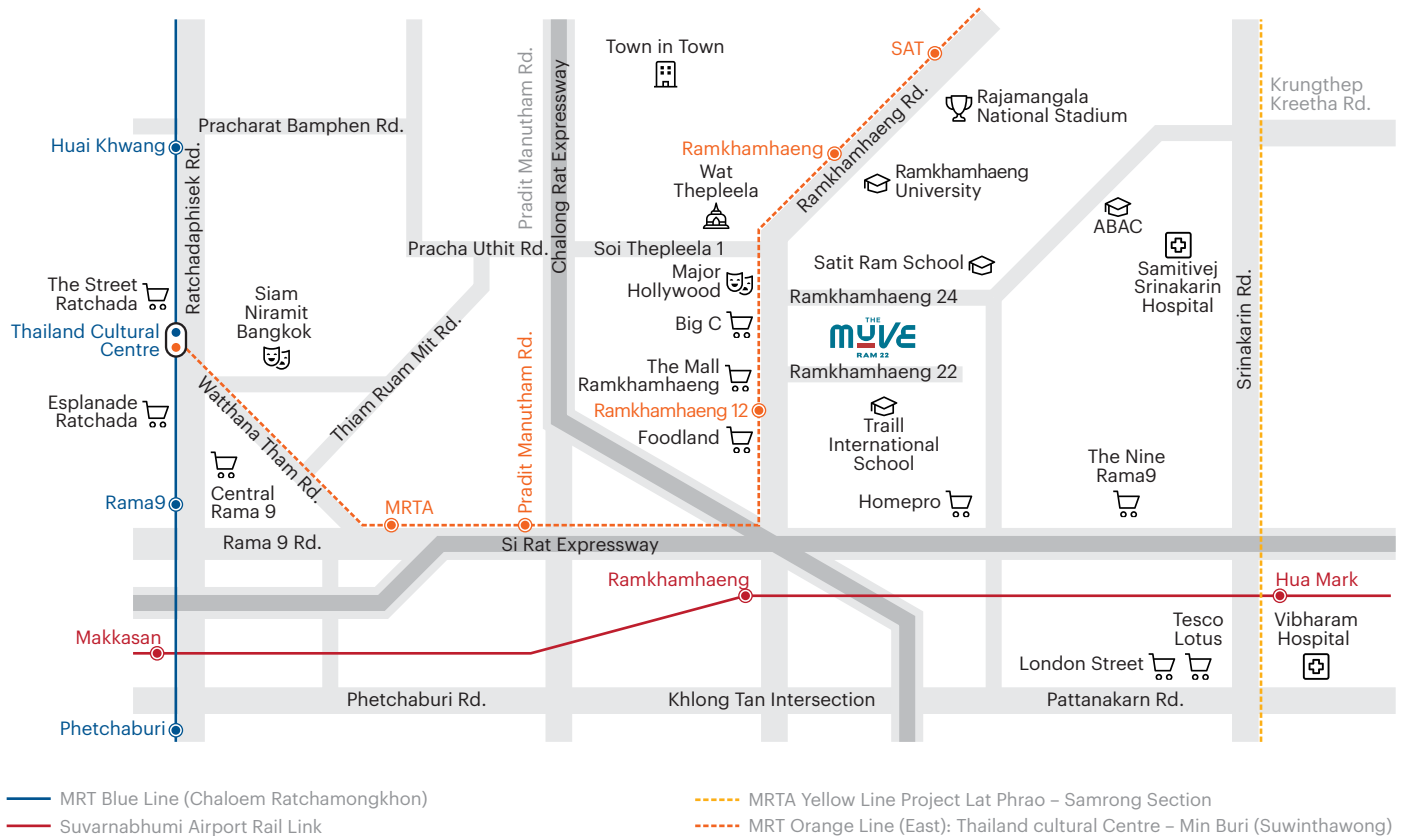
**“Every MUVE
caters to your passion”**

**At THE MUVE Ram 22, you can MUVE your life
in so many directions ... all at the same time.**

Our design has been curated to cater to every mode of life: living, working, learning, and so much more. This residential complex is located in Ramkhamhaeng, one of Bangkok’s most vibrant lifestyle hubs, offering quick access to nearby neighbourhoods, such as Sukhumvit, Rama 9, and Srinagarindra. In addition, two mass rapid transit train lines are just a stone’s throw away.

MOVE YOUR LIFE
FORWARD

MOVE LIFE



“A great location means more possibilities to get around faster”

Living at THE MUVE Ram 22 presents you with a wide range of transportation options for your daily commute. The property is close to the yellow and orange MRT lines, as well as the Airport Rail Link. Also nearby are access points to the Chalong Rat Expressway (Ram Inthra–At Narong), the Si Rat Expressway, and the Bangkok–Chonburi Motorway. Living here, you’ll be spoiled with all the superior choices that are yours to make.

DOUBLE FACILITIES

“Work – life balance perfection starts here”

THE MUVE Ram 22 features not one but two whole floors of community facilities. In addition to the Co-Working Space, the Camera Studio and Meeting Room are at your disposal. Meanwhile, the on-site fitness room helps you stay active.





CREATIVE GARDEN

“Relax... and let your creative juices flow”

Thanks to this outdoor workspace, you can get some fresh air and get work done. Your whole team can take advantage of the workshop table, complete with lamps and electrical outlets. Alternatively, you yourself can focus on your solo project in the Private Zone or use the Live Pod (Self Space) to do a live stream or take photos of your products against a lush backdrop.



ROOFTOP GARDEN

“Boost your oxygen and energize your soul”

After a hard day’s work, why not visit the rooftop garden and gaze out on the beautiful cityscape and unwind. If the garden’s vibrant geometric design awakens your inner active self, you can use the pull-up bar to get your blood pumping or practise yoga in the shade and enjoy the breeze. Alternatively, you can just stroll around and appreciate the refreshing greenery.

CAMERA STUDIO

“Snap and post!”

This is your time to shine! At the Camera Studio, complete with props, backdrops, and studio lighting, you can take authentic, professional-looking snapshots of your products or yourself and post them on social media in an instant.



MEETING ROOM

“Contemplate and create!”

Next to the Camera Studio, you will find a meeting table, TV connectivity equipment, and a whiteboard for you to take notes of your brilliant ideas whenever they pop up.



CO-WORKING SPACE

“Be the master of your own work schedule”

Stay connected and get your job done whenever you need to. The moveable lounge-like furniture allows you to work in your own comfort corner. Meanwhile, the Private Zone bar lets you face away from others and easily concentrate on the task at hand.

A vending machine and a coffee station are also available to help you through those long hours of a day.



FITNESS

**“Staying in shape helps you
MUVE farther and further”**

You have to get your body ready first before you can give work your all. THE MUVE Ram 22 helps you do just that. Our on-site fitness room features treadmills, stationary bikes, a rack of weights, benches, and a panoramic 180° view. Its interlocking lights, resembling the pattern on the facade, are designed to motivate you to meet new exercise goals.



PROJECT INFORMATION

Location	:	Soi Ramkamhaeng 22, Hua Mak, Bang Kapi, Bangkok
Land Area	:	Approximately 1 Rai
Project Type	:	2 residential buildings (8 storey) and 1 storey building
Unit Type	:	254 Units

Unit Details	Unit area (Sq.m.)
1 Bedroom 1 Bathroom	21.50 – 22.00
1 Bedroom 1 Bathroom	23.75 – 24.75



FACILITIES

Facilities :

- Lobby
- Co-working area (Co-working space / Meeting & Studio room)
- Laundry
- Gym room with equipment
- Rooftop garden / Garden with recreation area
- Wireless internet available at lobby, co-working area, gym room and garden with recreation area.

Others :

- 24-hour security by guard service
- 24-hour CCTV
- Parking spaces
- Mechanical parking

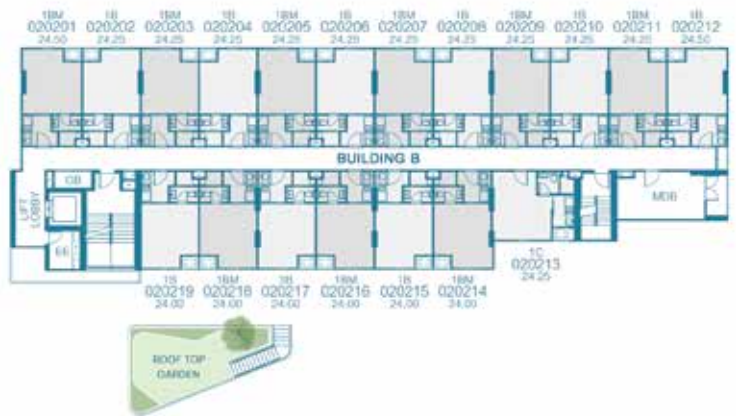
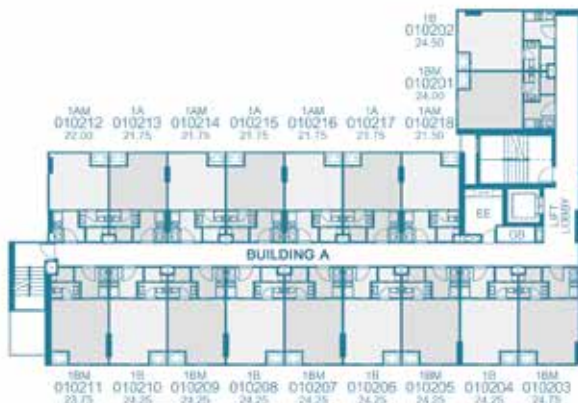
Remark : The condition is subject to change without prior notice.



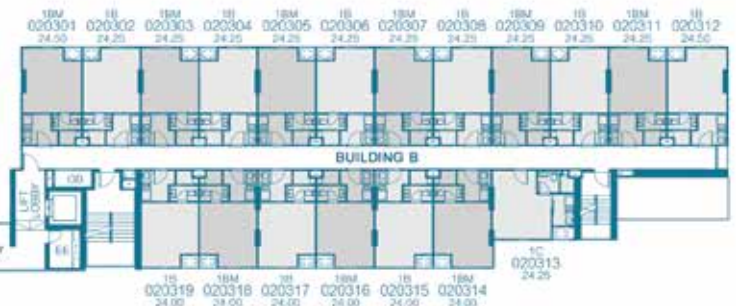
FLOOR PLAN



GROUND FLOOR



2nd FLOOR



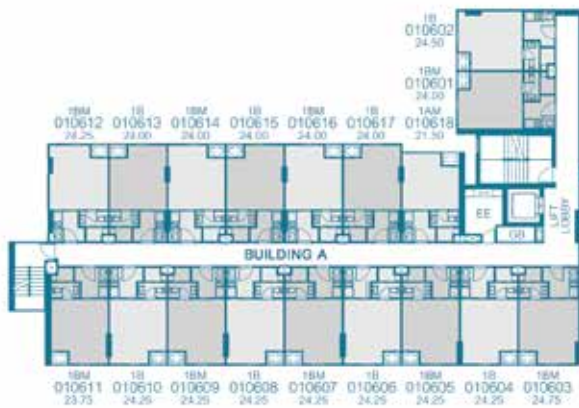
3rd FLOOR



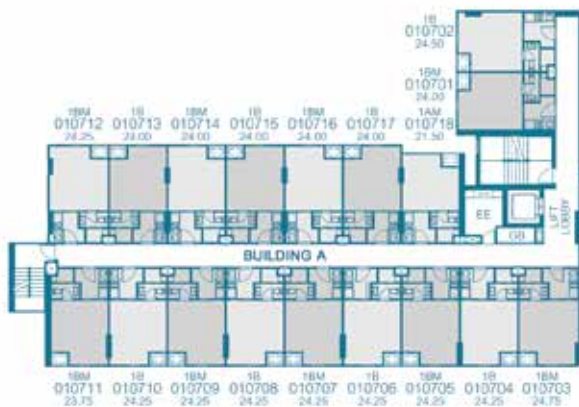
4th FLOOR



5th FLOOR



6th FLOOR



7th FLOOR



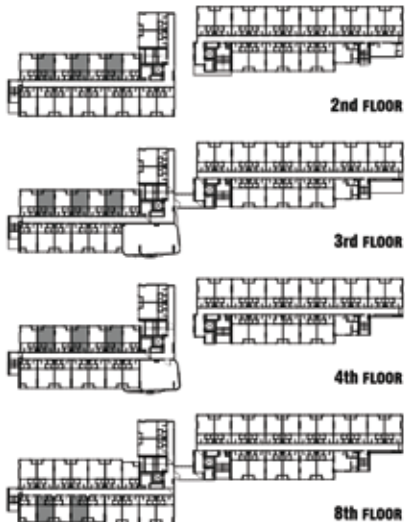
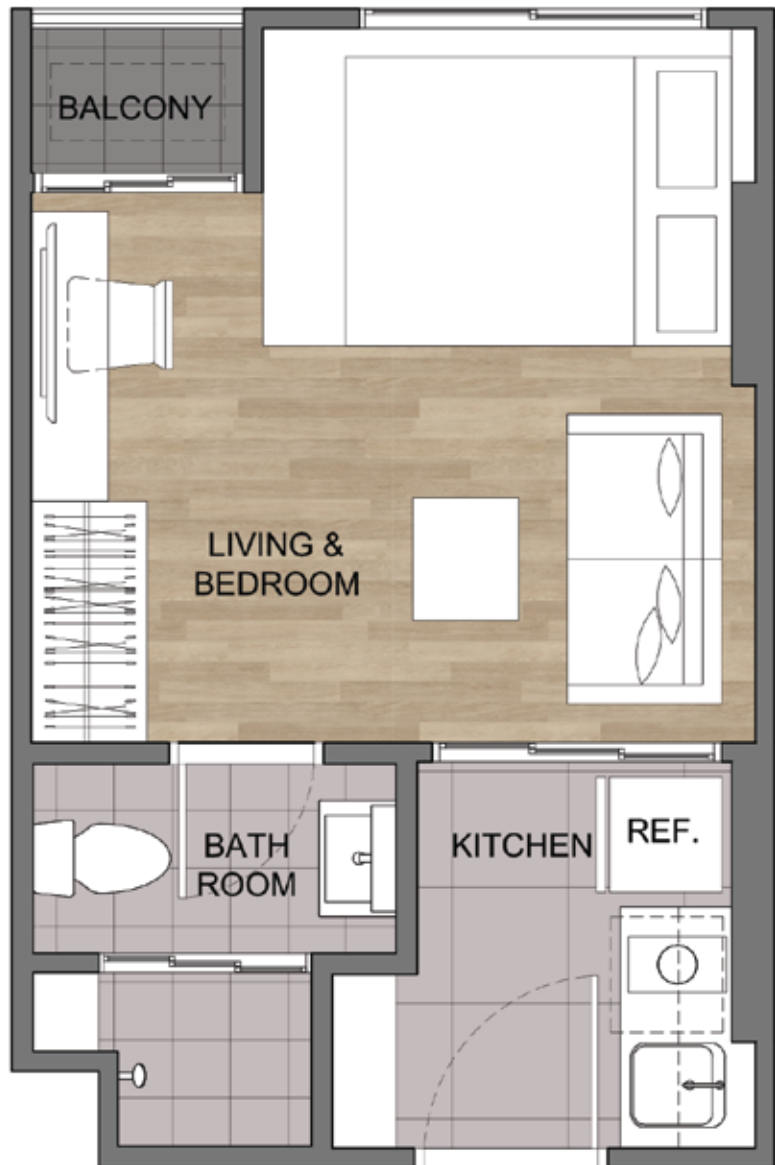
8th FLOOR



ROOF FLOOR

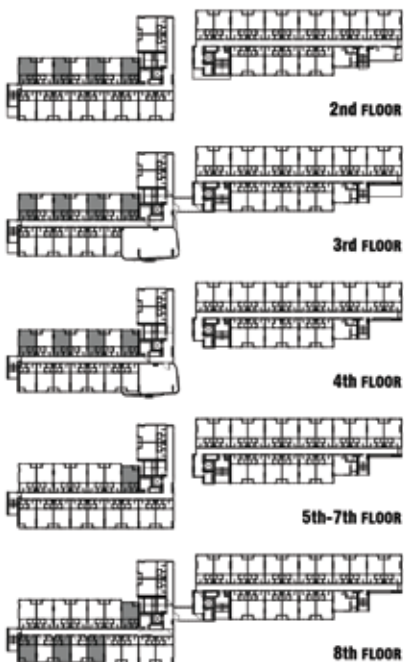
MOVE
FORWARD
YOUR
LIFE

UNIT LAYOUT



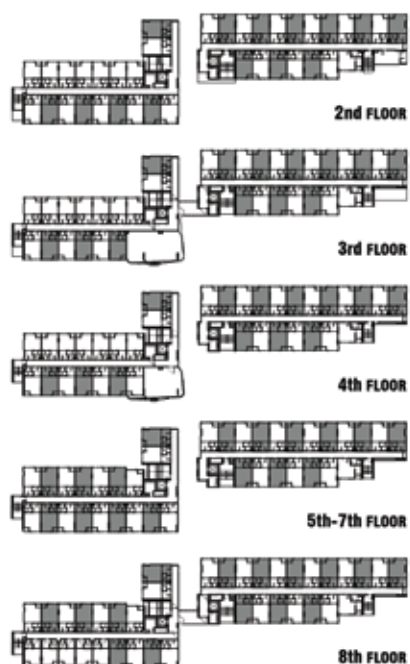
1A

21.75 – 22.00 SQ.M.



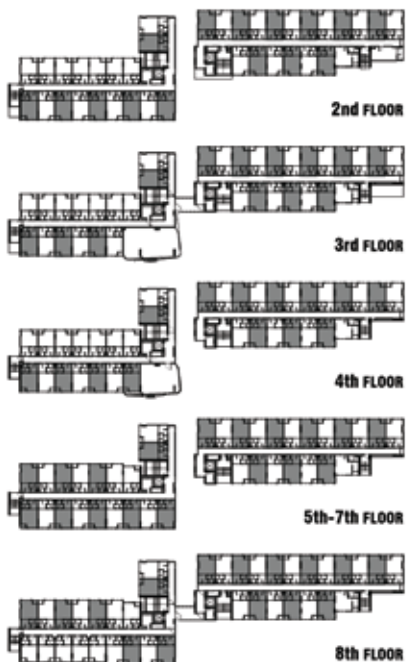
1AM

21.50 – 22.00 SQ.M.



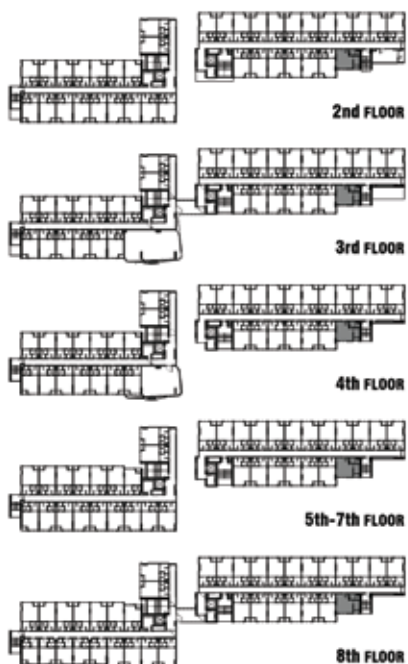
1B

23.75 – 24.50 SQ.M.



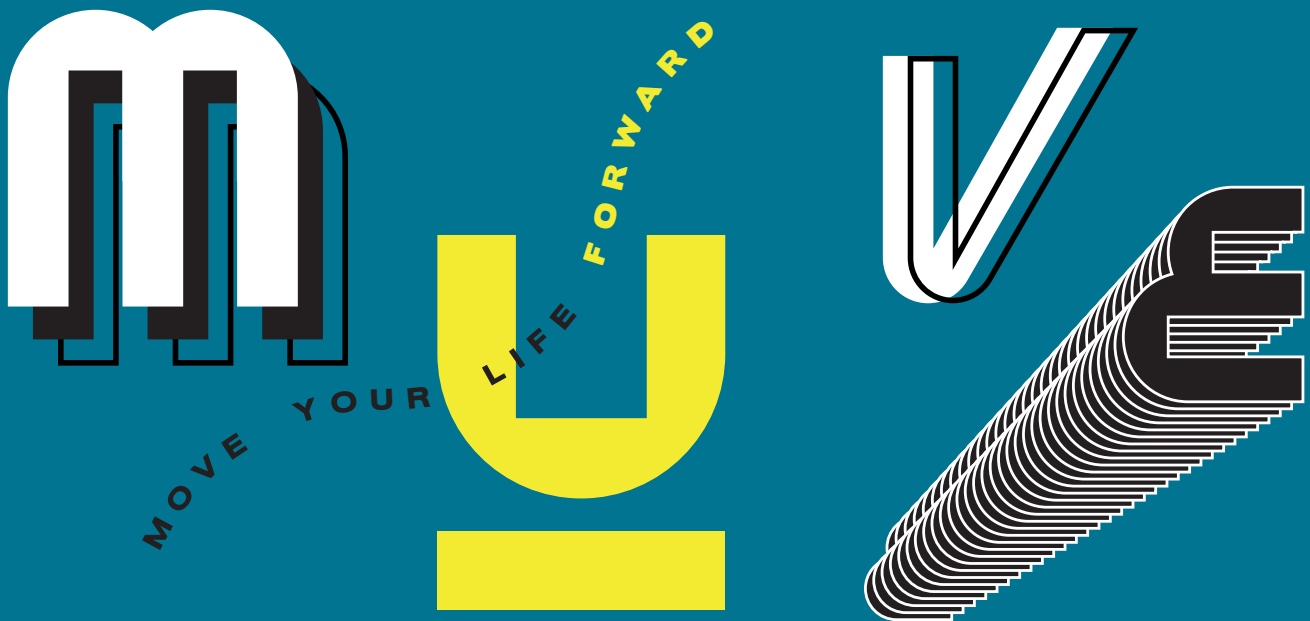
1BM

23.75 – 24.75 SQ.M.



1C

24.25 SQ.M.



THE
MUVE
 RAM 22

 **SANSIRI**

sansiri.com

Project Owner : Siripat Twelve Co.,Ltd. Company's registered no. 0105563156833. Head office : 59 Soi Rim Khlong Phra Khanong, Phra Khanong Nuea, Vadhana, Bangkok, 10110.
 Registered capital(THB) : 1,000,000, Paid up capital(THB) : 1,000,000 (as of date 16 Apr 2021). The President : Mr. Srettha Thavisin. The Project : THE MUVE Ram 22, land title deed no. 33755 - 33759, 137372, approximately area 1 Rai, located at Hua Mak, Bang Kapi, Bangkok, as a Condominium of 8 storey(ies), 2 building(s), 1 storey building, total of 254 unit(s), (for residential: 254 units, and for commercial: - units). The land and building will be mortgaged and processed to submit the building permission. Construction will be started in Sep 2021 and expected to be completed in May 2023 which will later be registered as the condominium. The unit owner shall pay sinking fund, common fee, tax and other fees as prescribed by the Project Owner or the Condominium Juristic Person subjected to the Condominium law.Land title deed no. 33755 - 33759, 137372, Bang Kapi, Bangkok, approximately area 1 Rai, Construction will be started in Sep 2021 and expected to be completed in May 2023. For more information Call 1685 (Call Center)