



THE  
**muVE**  
BANGKHAE

**The Balance to Your Every Muve**  
邁向完美平衡的生活

MOVE YOUR LIFE  
FORWARD



**GIVE IT ALL YOU'VE GOT...  
BECAUSE YOU CARE.**

**THE MUVE Bangkhae** encourages you to be unapologetically active. Whether it be work or play, the spaces we have designed will make your life a breeze. And because our property is just 190 metres from Bang Khae MRT station, **you will always have all the time you need to do all the things you love.**

**對熱愛的事物  
全力以赴**

**THE MUVE Bangkhae** 給積極熱愛生活的您提供充分的活動空間！無論是工作還是休閒娛樂，這裡都是您最佳的起點；距離MRT Bang Khae地鐵站僅190公尺，便利的生活環境讓您有更多時間去做想做的事情。



## GOOD LOCATION. GOOD TIMES.

Your daily commutes to and from THE MUVE Bangkhae can't possibly be more convenient, thanks to Bang Khae MRT station being just 190 metres away. Our Phetkasem Road location makes it easy for you to travel to other neighbourhoods of Bangkok. Nearby amenities include malls, convenience stores, trusted hospitals, and renowned schools and universities. Since everything is just a stone's throw away, you will have more time to do all the things you love.

## 地理位置佳 節省寶貴時間

從項目走到MRT Bang Khae地鐵站的距離只有短短190 公尺，為您節省通勤的時間與精力。THE MUVE Bangkhae位於四通八達的Phetkasem路上，可輕鬆往返曼谷其他區域。這裡生活機能齊全，包括購物商場、便利店、醫院以及著名學府和高等教育機構，一切都近在咫尺，您將有更多時間投入到自己真心喜歡的事物上。



## SEMI - OUTDOOR LOBBY

### CONNECTING ALL OPPORTUNITIES.

The semi-outdoor lobby blurs the line between the interior and the exterior. Next to the waiting and lounging area are mailboxes stretching along the length of the wall. There is even a drop-off box for outgoing mail and parcels. All of these facilities cater to your lifestyle needs.

### 迎向新機會

開放式門廳巧妙利用空間，將室內等候區、休息區以及信箱區，串連至戶外。還增加了接收信件和包裹的投遞區，一切設施滿足您所有各項生活需求。



# CO-WORKING SPACE

## YOUNG AND AMBITIOUS.

THE MUVE Bangkok features a designated co-working space. Whether you sit at the bar or in the self-study zone, you will be inspired by new ideas. As you work, you can sip on some freshly brewed coffee complemented by a view of the sprawling cityscape outside. For serious meetings, you can book the board room. What's more, the onsite vending machine lets you grab some quick grub without losing your rhythm.

## 青春活力無限創意

THE MUVE Bangkok的共享工作空間，提供寧靜舒適的工作環境，讓您工作得更專注，藉此激發更多創作靈感。在忙碌之餘同時，啜飲一口香濃的咖啡，悠遊欣賞窗外廣闊絢麗的城市風情，舒緩疲勞。另外還附有會議室，供您做私人討論。一旁還有自動販賣機，隨時補充體力，繼續奮鬥。





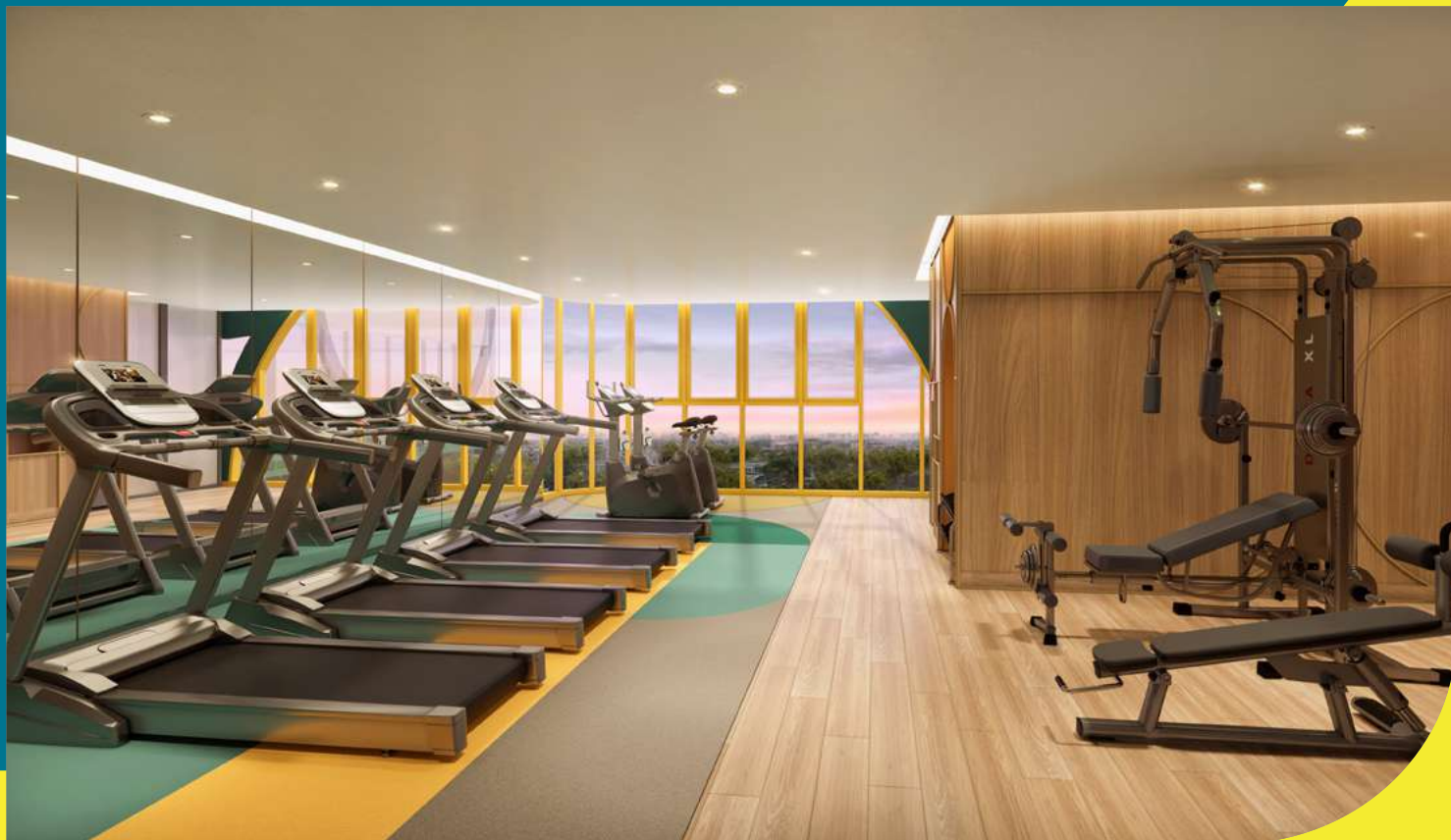
## KITCHEN STUDIO

### **SOUND. CHECK! LIGHTING. CHECK! ACTION!**

Whether you are a food YouTuber or an avid home cook, our kitchen studio can meet your needs. On top of a complete range of cooking and baking utensils, the studio also comes with its own filming equipment. Lighting and camera placements have all been designed to help you put your best spatula forward.

### **紀錄精湛廚藝的片刻**

無論您是美食YouTuber還是熱愛烹飪的人，這廚藝工坊皆能滿足各種料理需求。除了烹飪和烘焙設備齊全外，還提供拍攝器材以及照明設備，隨時等著您來展現廚藝。



## FITNESS ROOM

MOVE

### WORK HARD. WORK OUT HARDER.

Whether you want to build muscles, carve out sixpack abs, or strengthen your heart, our fitness room has just what you need. Our cardio machines and weight-training equipment will help you stay in tip-top shape.

### 努力工作 使勁鍛鍊

如果您想增強肌肉、練就六塊腹肌還是增強核心肌群訓練，就來健身房使用完整的運動設備，包含心肺有氧器材、重量訓練器材，讓您保持健康和完美體態。





# OUTDOOR CO-WORKING SPACE

## INSPIRATION FOR THE WIN.

Our outdoor co-working space accommodates a wide range of working from home necessities. Electrical outlets have been strategically placed, and the workstations are linked by steppingstones to remind you that you can take it one step at a time. This whole area is surrounded by lush foliage all year round.

## 激發成功的潛能

把工作空間從室內延伸到戶外，提供綠意盎然的工作環境。每個桌位都配有電源插座，讓您工作不間斷，地面上的墊腳石設計，提醒要按部就班完成工作。





## PROJECT INFORMATION

**Location**  
項目位置 : Soi Prasan, Bang Khae Nuea, Bang Khae, Bangkok  
曼谷Bang Khae北區 Bang Khae分區 Prasan 巷

**Land Area**  
項目面積 : Approximately 1 Rai (approximately 17,222 Sq.ft)  
約1,600平方公尺 (17,222平方英尺)

**Project Type**  
建物類型 : 1 Residential Building (8 storey)  
1 棟住宅大樓 (8層樓)

**Total Unit**  
總住宅數 : 261 Units  
261戶

Unit Details 戶型	Unit Area (Sq.m) 面積 (平方公尺)	Unit Area(Sq.ft) 面積 (平方英尺)
1 Bedroom 1 Bathroom 1 房 1 衛	24.00 - 24.25	258.33 - 261.02
1 Bedroom 1 Multipurpose Room 1 Bathroom 1+1 房 1 衛	35.25 - 35.50	379.43 - 382.12



# FACILITIES

## Facilities 公共設施

- Lobby
- Co-working spaces
- Meeting room
- Kitchen studio
- Laundry area
- Fully equipped fitness room
- Community garden
- Outdoor co-working spaces
- Wireless internet in the lobby, co-working spaces, community garden, and outdoor co-working spaces

## Others 其他

- 24-hour security by guard service
- 24-hour CCTV
- Parking spaces

- 迎賓大堂
- 共享工作空間
- 會議室
- 共享廚房
- 洗衣房
- 健身房
- 花園
- 露天工作區
- 公設空間均設有無線WIFI

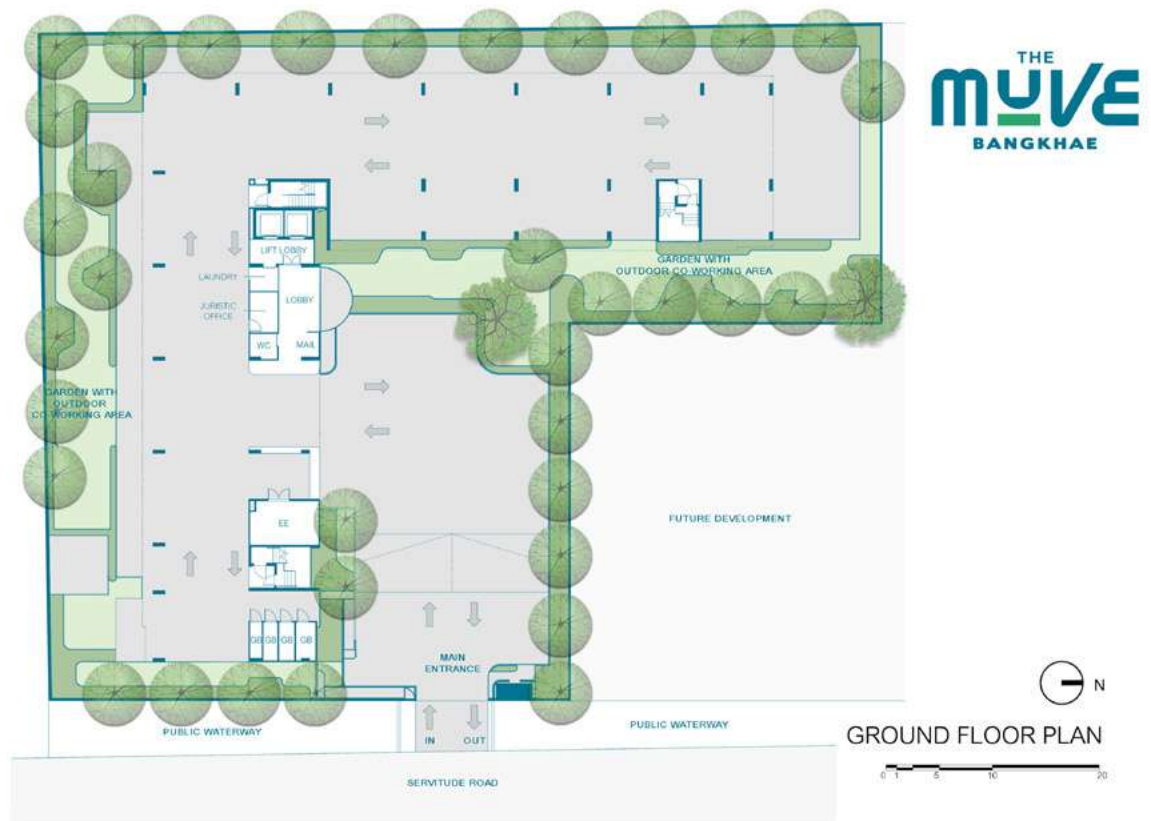
- 24小時保全服務
- 24小時監控錄影CCTV
- 停車空間

Remark : The condition is subject to change without prior notice.

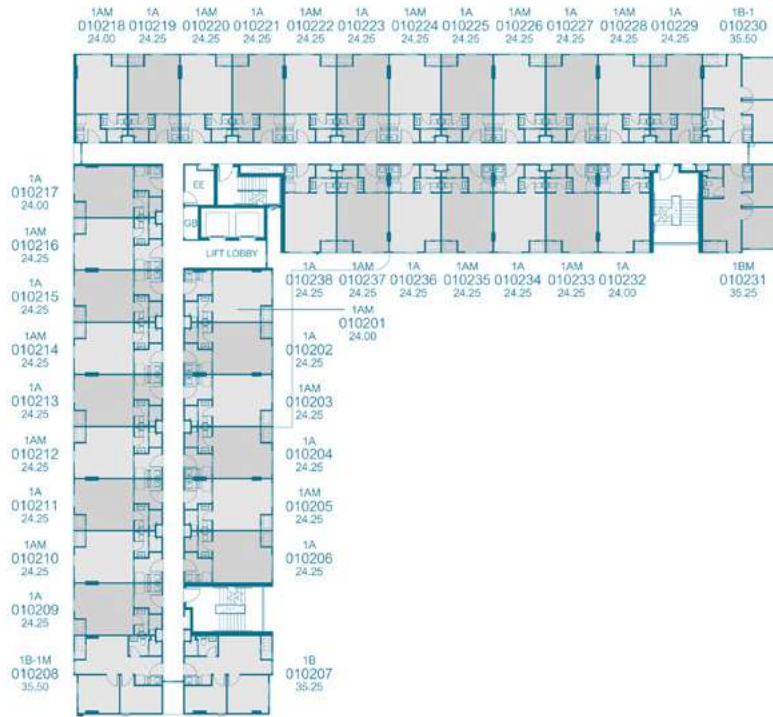
備註：條件如有更改，恕不另行通知。



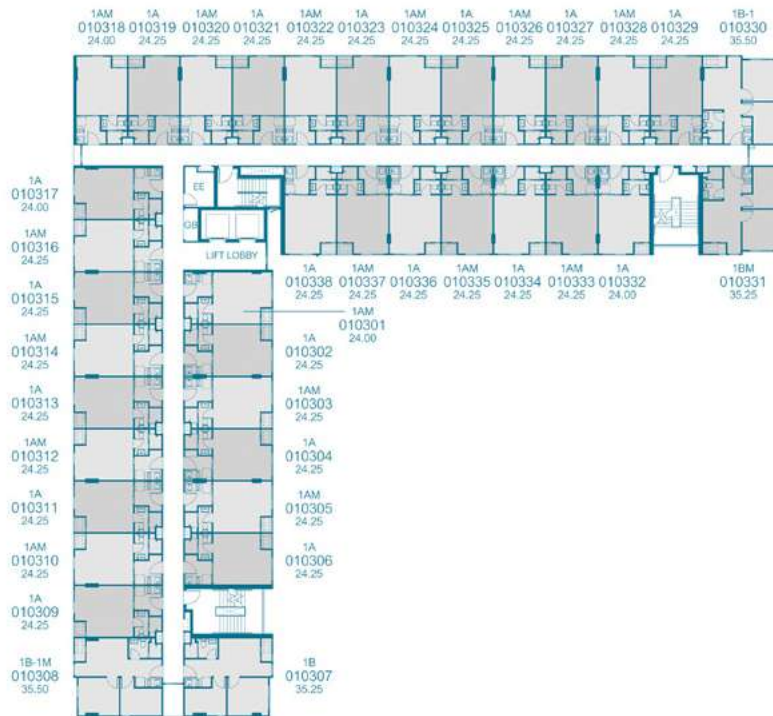
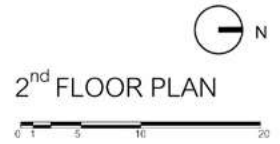
# FLOOR PLAN



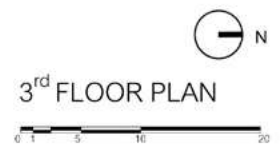
GROUND FLOOR PLAN



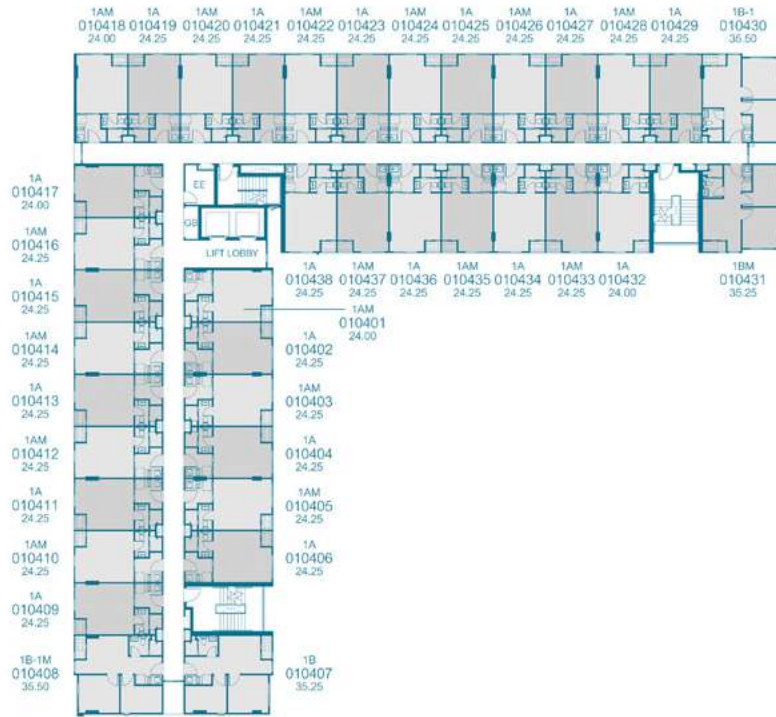
2<sup>nd</sup> FLOOR PLAN



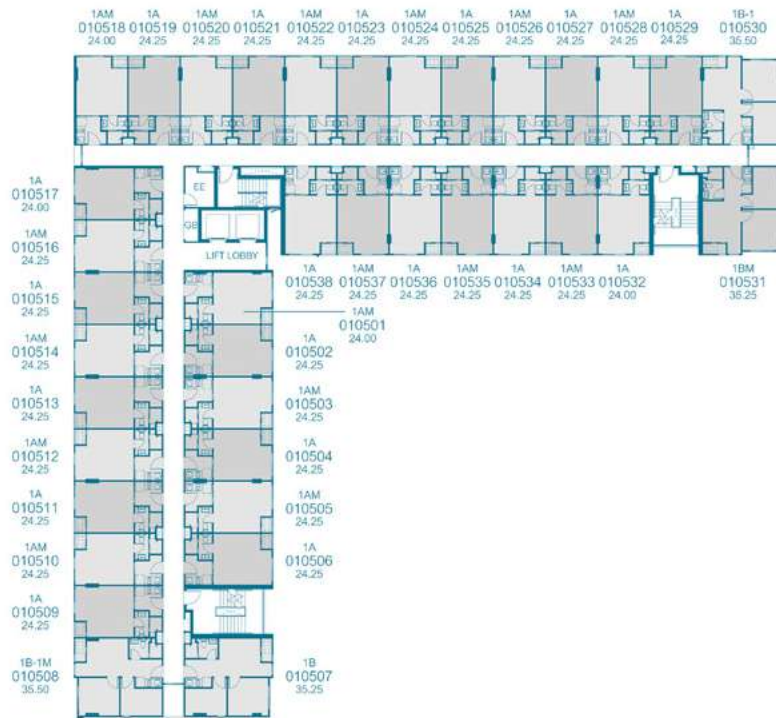
3<sup>rd</sup> FLOOR PLAN



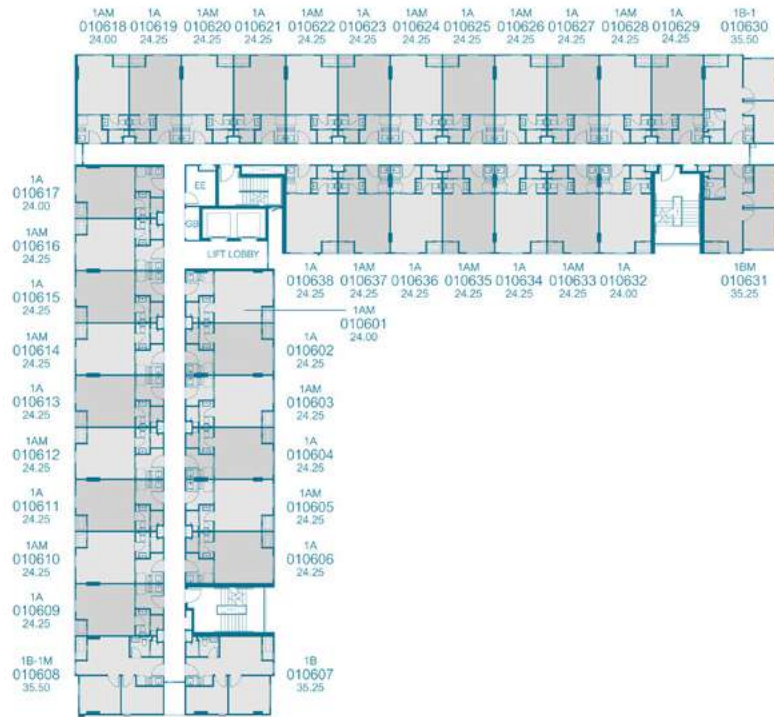




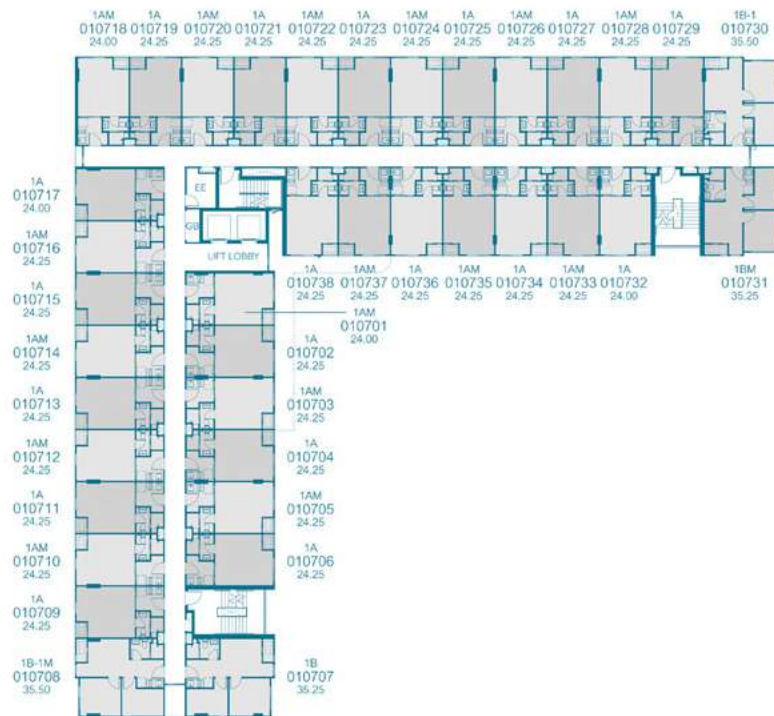
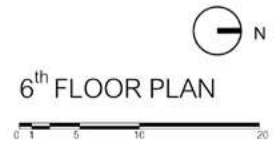
4<sup>th</sup> FLOOR PLAN



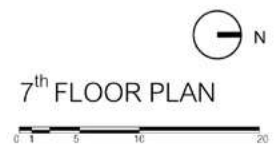
5<sup>th</sup> FLOOR PLAN



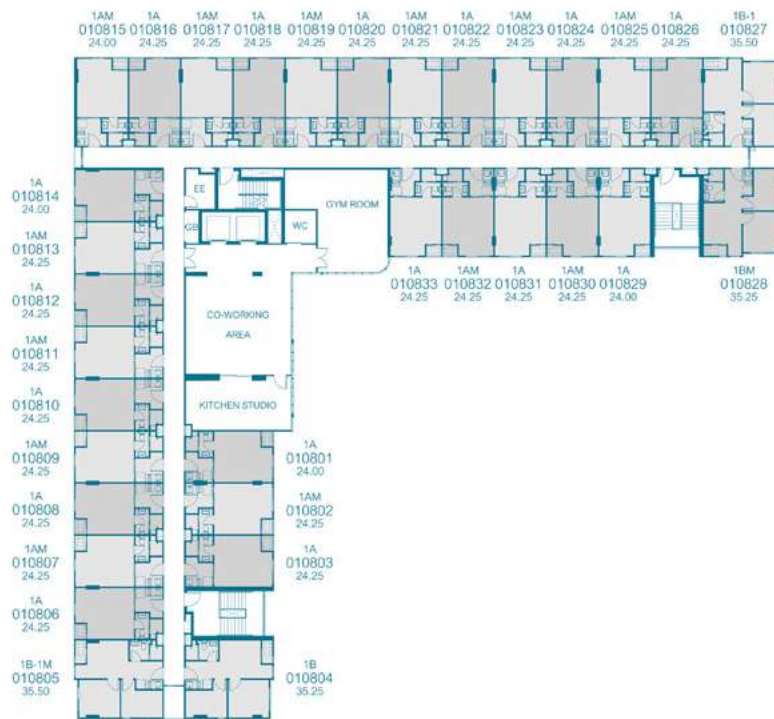
6<sup>th</sup> FLOOR PLAN



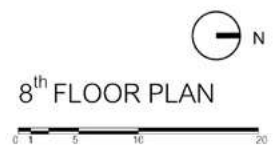
7<sup>th</sup> FLOOR PLAN







8<sup>th</sup> FLOOR PLAN

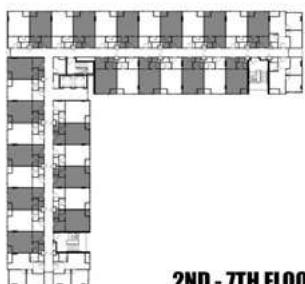


MOVE YOUR LIFE  
FORWARD

## UNIT LAYOUT



8TH FLOOR PLAN



2ND - 7TH FLOOR PLAN

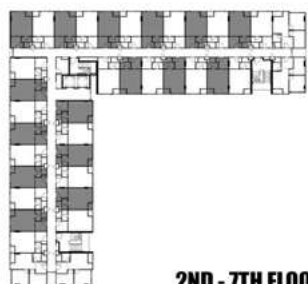
1A

24.00 - 24.25 SQ.M.





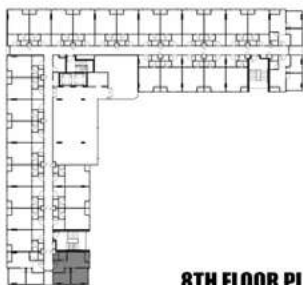
**8TH FLOOR PLAN**



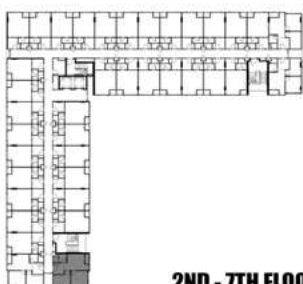
**2ND - 7TH FLOOR PLAN**

**1AM**

24.00 – 24.25 SQ.M.



**8TH FLOOR PLAN**



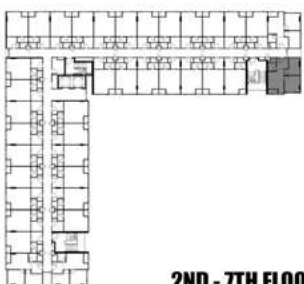
**2ND - 7TH FLOOR PLAN**

**1B**

**35.25 SQ.M.**



**8TH FLOOR PLAN**



**2ND - 7TH FLOOR PLAN**

**1BM**

**35.25 SQ.M.**





**8TH FLOOR PLAN**



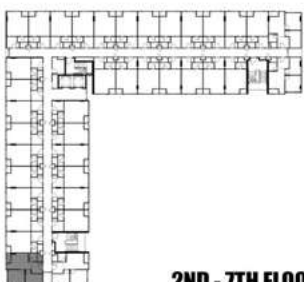
**2ND - 7TH FLOOR PLAN**

**1B-1**

**35.5 SQ.M.**



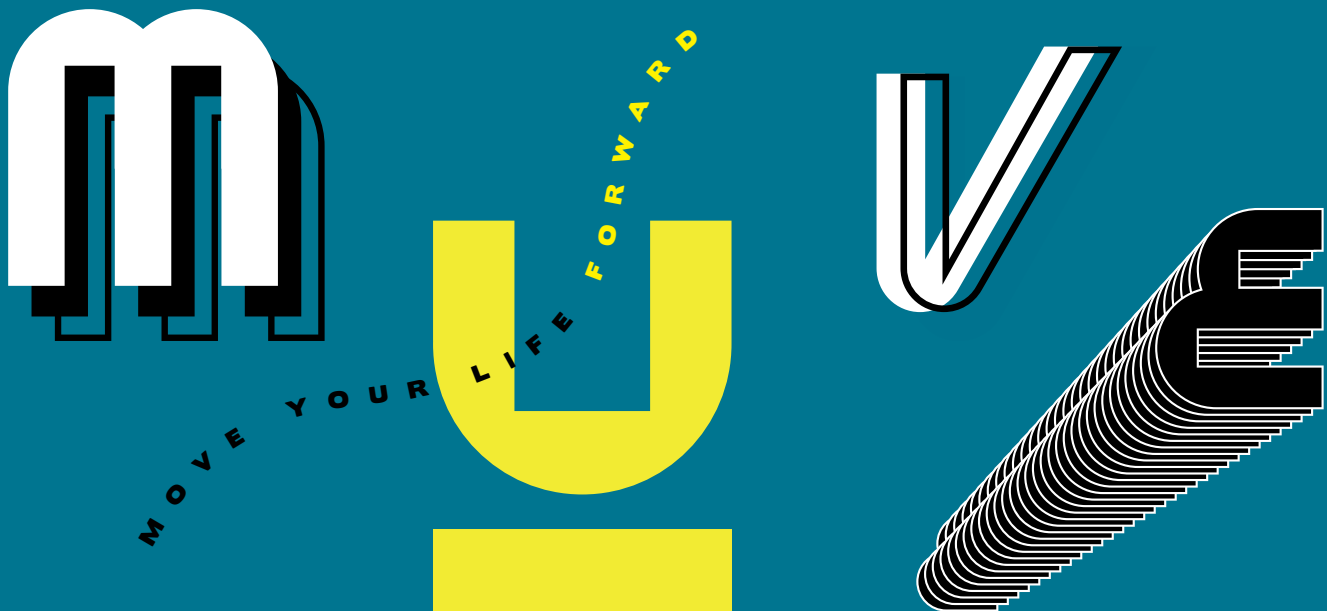
**8TH FLOOR PLAN**



**2ND - 7TH FLOOR PLAN**

**1B-1M**

**35.5 SQ.M.**



THE  
**muve**  
BANGKHAE

 **SANSIRI**  
[sansiri.com](https://sansiri.com)

Project owner: Siri Watthana Holding. Registration number: 0105559013446. Head office: 59 Soi Rim Khlong Phra Khanong, Watthana, Bangkok 10110. Registered capital: 1000,000,000.00 baht. Paid-up capital: 1000,000,000.00 baht (as of 9 Jul 21). Managing Director: Srettha Thavisin. Project name: The Muve Bang Khae. Title deed no: 23275. Land area: about 1 rai. Location: Bang Khae Nuea, Bang Khae. Project type: one 8-storey residential building with 261 units (261 residential units. No commercial unit). The building and land have financial encumbrances with Siam Commercial Bank. Construction permit in process. Construction to begin Feb 2022 and to complete Jun 2023. To be registered as condominium upon completion. Co-owners shall pay the sinking fund, common property fee, taxes, and other fees fixed by the project owner or condominium juristic person under Thailand's condominium law.