

# FLO

BY SANSIRI

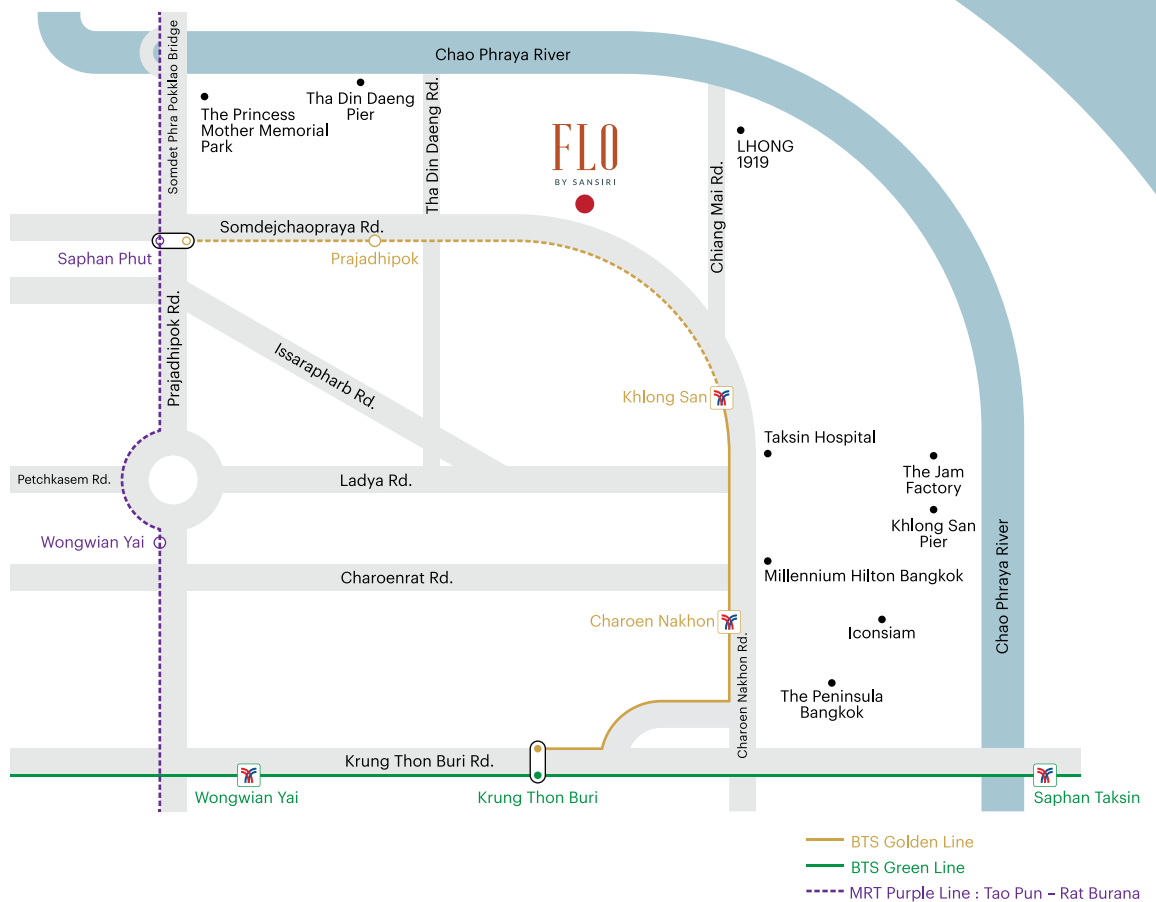


 SANSIRI

computer generated imagery

# Let Life Flow

Discover a way of living with a “Work-Life Flow”,  
moving to the rhythm of a new generation  
and the beat of every inspiration



## A mere 350 metres from BTS Khlong San Station

Connecting you quickly and conveniently to the CBD via the BTS Green Line network. And ready for an effortless journey out of town on the future MRT Purple Line.

The project is surrounded by a multitude of lifestyle destinations, each with its own inimitable style, including luxury hotels, art galleries, cafes, and restaurants.

Considered the main landmark of Thonburi and an indispensable culinary and shopping attraction, ICONSIAM is only 3 minutes away to fulfil colourful desires any time night and day.



# Concept Design

The distinctive **“HISTORIC RED BLOC”** of the cultural district is an integral part of “FLO by Sansiri”  
Serving as inspiration for the prevalence of brick and clay tile tones, woven into the fabric of the architecture to create the unique contemporary identity of the project.





## Garden Bloc

The traditional environment of the neighbourhood is filled with fruit orchards. Forming the inspiration for a landscape design concept known as “GARDEN BLOC”. Patterns, textures, and wickers are crafted into furniture and “Universal Design” throughout the project for a truly organic and relaxing appeal.







computer generated imagery

## Lobby

The Lobby provides visitors with a memorable welcome, blending the striking curves of church lines in perfect harmony with characteristics of Thai residential architecture in a contemporary minimalist interpretation.

Like a flowing canvas, the White terrazzo flooring provides a spectacular focal point to highlight bursts of colour from furniture in Modern Geometry Form.



computer generated imagery.

# Creative Art Space

A space to let your creative juices fully flow with the greatest possible functionality. Group work and solo endeavours are equally stimulating in surroundings uniting vintage materials with a touch of local culture and sunlight-reflecting mirrors, interspersed with woven patterns and colourful tiles to evoke a natural, easy-on-the-eyes appeal while you get down to business.



# Gym

Enjoy working out to the max in a fully equipped fitness centre with cardio and weight training facilities, in surroundings designed to keep you active throughout the workout without the sense of style skipping a beat.

Retro Thai-Chinese culture is communicated through wrought iron framed door panels for added dimension, while copper lockers provide a special connection between the past and present in perfect symmetry.



computer generated imagery

# Pool

An oasis of calm, the Half-Olympic saltwater swimming pool extends 25 metres in length. Distinctive clay tiles gradually rising in shades of light-to-dark blue are punctuated with white tiles shimmering across the pool. The spiral staircase is a unique feature and part of the “Historical Twist” concept, realising a Spiral Twist appearing as if from the depths of the pool.

Inspired by the “Red Bloc” design concept, the classic brick orange colour of the staircase is crisscrossed with yellow for a more modern look and seamlessly flows between both Double Facilities floors for you to enjoy vistas of the Chao Phraya River at your leisure.







# Sky Bar

Enjoy flowing views of the Chao Phraya River from the Sky Bar's dedicated indoor and outdoor zones.

Interiors come with vibrant furniture and an easily modified layout to respond to any desire,

While the Bar is punctuated by a yellow-tiled church arch, with trowel-textured paint and brick-painted corrugated wood covering the walls for you to appreciate recreation at its most vivid.

# Riverview Deck

Enjoy River and City views from the dual-zone vantage point.

Providing a light exercise area in the City View Zone accompanied by spectacular city vistas and comfortable surroundings.

While a Party Deck on the River View side comes complete with group seating and daybeds

Sheltered by the shade-strewn canopy of oversized trees as the mighty Chao Phraya flows below.





# FLO PROJECT INFORMATION

<b>Location :</b>	Somdet Chao Phraya Road, Khlong San, Khlong San, Bangkok
<b>Land Area :</b>	Approximately 2 Rai
<b>Project Type :</b>	1 Residential Building (22 Stories)
<b>Total Unit :</b>	508 Units

Unit Details	Unit Area (sq.m.)	Unit Area (sq.f.)
1 Bedroom 1 Bathroom (S)	24.50 - 27.75	263.72 - 298.70
1 Bedroom 1 Bathroom (M)	29.00 - 34.75	312.15 - 374.05
2 Bedroom 1 Bathroom	46.00 - 50.00	495.14 - 538.20
2 Bedroom 2 Bathroom	48.00 - 64.00	516.67 - 688.89
1 Bedroom 1 Bathroom (S, High ceiling unit)	24.50 - 25.50	263.72 - 274.48
1 Bedroom 1 Bathroom(M, High ceiling unit)	29.00 - 34.75	312.15 - 374.05
2 Bedroom 1 Bathroom (High ceiling unit)	46.00 - 48.00	495.14 - 516.67
2 Bedroom 2 Bathroom (High ceiling unit)	48.00 - 64.00	516.67 - 688.89

## Facilities :



Lobby



Creative Art Space



Sky Bar



Mail & Craft Room



Swimming pool  
and kid's pool



Self-Laundry



Garden Bloc



Meeting Room



Gym with equipment



Riverview Deck



Wireless internet  
available at facilities



Playground and Sky  
Garden

## Additional :



24-hour CCTV



24-hour security  
by guard service



Parking spaces



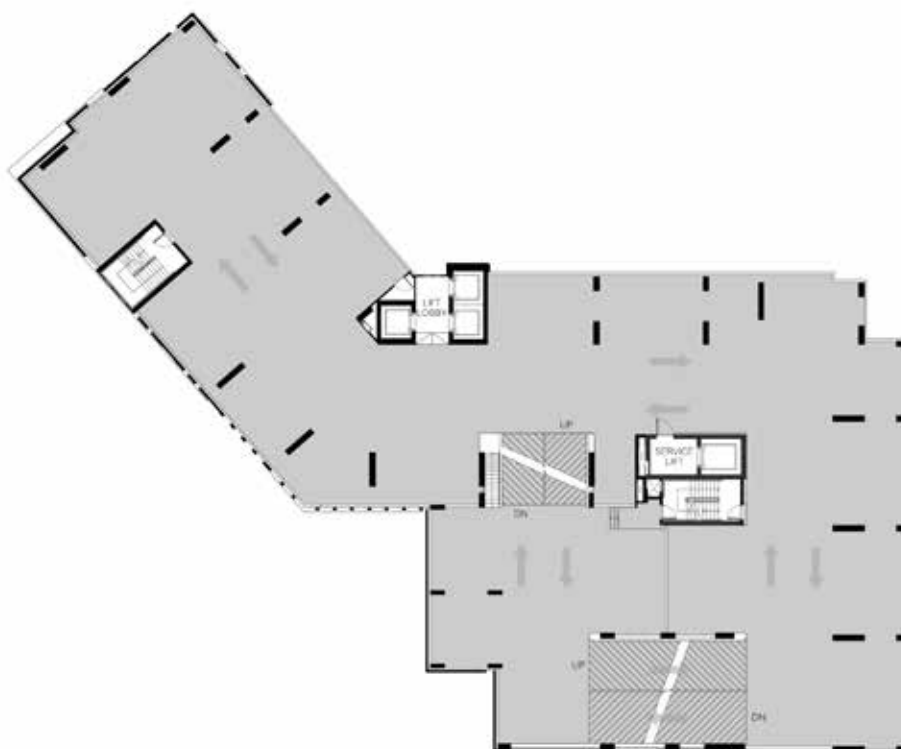
Electric vehicle charging station



# FLO PLAN

FLO  
BY SANSIRI





2<sup>nd</sup> - 4<sup>th</sup> FLOOR PLAN

0 1 5 10



5<sup>th</sup> FLOOR PLAN

0 1 5 10





N  
6<sup>th</sup> - 19<sup>th</sup> FLOOR PLAN  
0 1 5 10



N  
20<sup>th</sup> FLOOR PLAN  
0 1 5 10



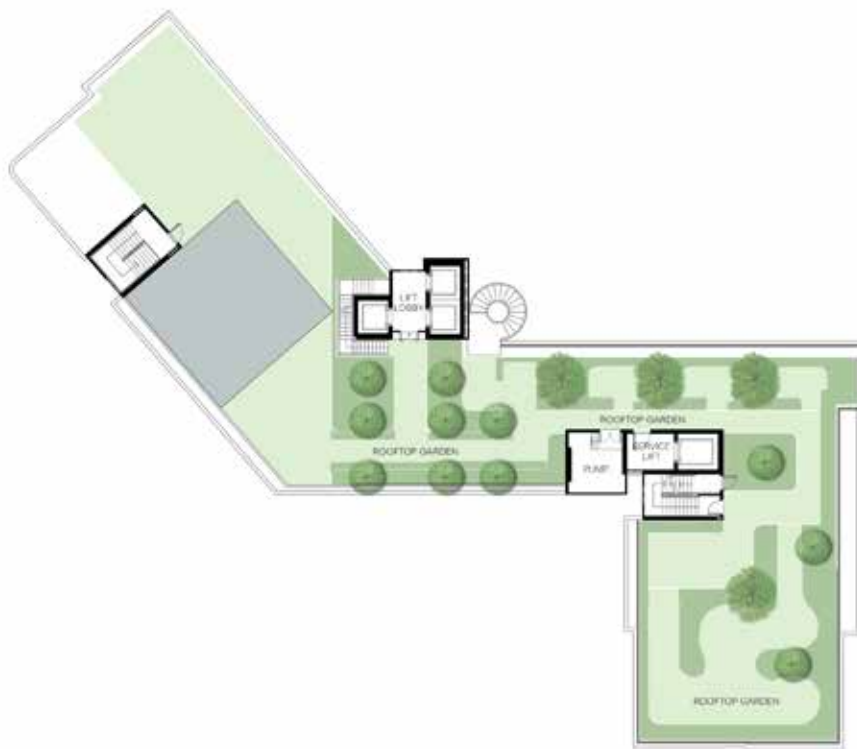
21<sup>st</sup> FLOOR PLAN



22<sup>nd</sup> FLOOR PLAN







**FLO**  
BY SANSIRI



## 1A

24.50 - 25.50 SQ.M.



## 1AM

24.50 - 24.75 SQ.M.





# 1A-1

26.75 - 27.75 SQ.M.

**FLO**  
BY SANSIRI



# 1AM-1

27.00 SQ.M.

**FLO**  
BY SANSIRI



# 1A-L

24.50 - 25.50 SQ.M.

**FLO**  
BY SANSIRI



MAIN LEVEL



FURNITURE LEVEL



22nd FLOOR

21st FLOOR

20th FLOOR

# 1AM-L

24.50 - 24.75 SQ.M.

**FLO**  
BY SANSIRI



MAIN LEVEL



FURNITURE LEVEL



22nd FLOOR

21st FLOOR

20th FLOOR





# 1B

29.00 - 29.25 SQ.M.

FLO  
BY SANSIRI



# 1BM

29.00 - 29.25 SQ.M.

FLO  
BY SANSIRI



# 1C

34.75 SQ.M.

FLO  
BY SANSIRI



# 1CM

34.25 SQ.M.

FLO  
BY SANSIRI





# 1B-L

29.00 - 29.25 SQ.M.

**FLO**  
BY SANSIRI



MAIN LEVEL



FURNITURE LEVEL





# 1BM-L

29.00 - 29.25 SQ.M.

FLO  
BY SANSIRI



MAIN LEVEL



FURNITURE LEVEL



# 1C-L

34.75 SQ.M.

FLO  
BY SANSIRI



MAIN LEVEL



FURNITURE LEVEL



# 1CM-L

34.25 SQ.M.

FLO  
BY SANSIRI



MAIN LEVEL

FURNITURE LEVEL



20th FLOOR

# 2A

46.00 SQ.M.

FLO  
BY SANSIRI



6th-19th FLOOR



## 2C

48.00 SQ.M.

**FLO**  
BY SANSIRI



## 2A-1

50.00 SQ.M.

**FLO**  
BY SANSIRI





# 2A-L

46.00 SQ.M.

FLO  
BY SANSIRI



FURNITURE LEVEL



MAIN LEVEL



22nd FLOOR



21st FLOOR



20th FLOOR

# 2C-L

48.00 SQ.M.

FLO  
BY SANSIRI



MAIN LEVEL



FURNITURE LEVEL



22nd FLOOR



21st FLOOR



20th FLOOR



# 2B

48.00 SQ.M.

FLO  
BY SANSIRI



# 2D

51.00 SQ.M.

FLO  
BY SANSIRI



# 2E

59.00 SQ.M.

**FLO**  
BY SANSIRI



# 2F

64.00 SQ.M.

**FLO**  
BY SANSIRI





## 2B-L

48.00 SQ.M.

**FLO**  
BY SANSIRI



FURNITURE LEVEL



MAIN LEVEL



## 2D-L

51.00 SQ.M.

**FLO**  
BY SANSIRI



FURNITURE LEVEL



MAIN LEVEL



## 2E-L

59.00 SQ.M.

FLO  
BY SANSIRI



FURNITURE LEVEL



MAIN LEVEL



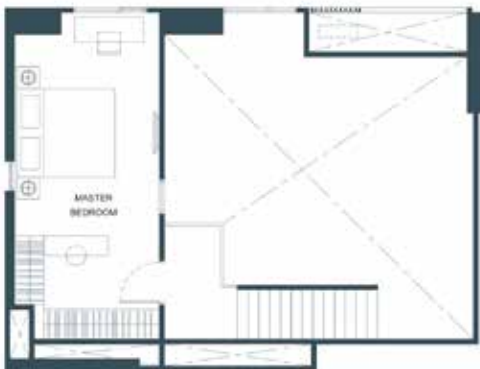
21st FLOOR

20th FLOOR

## 2F-L

64.00 SQ.M.

FLO  
BY SANSIRI



FURNITURE LEVEL



MAIN LEVEL



20th FLOOR



# FLO

BY SANSIRI



Project Owner : Sansiri Holding Six Co.,Ltd. Company's registered no. 0105558097484. Head office : 59 Soi Rim Khlong Phra Khanong, Phra Khanong Nuea Sub-District, Vadhana District, Bangkok 10110. Registered capital(THB) : 500,000,000.00 , Paid up capital(THB) : 500,000,000.00 (as of date 5 Sep 2022). The President : Mr. Srettha Thavisin. The Project : FLO by Sansiri, Land title deed no. 7982, 8122, approximately area 2 Rai, Located at Charoen Nakhon Road, Khlong San, Khlong San, Bangkok, as a Condominium of 22 storey(ies), 1 building(s), total of 508 unit(s), (for residential: 508 units, and for commercial: - units). The Land and building have been mortgaged with Kasikorn Bank PLC., In the approval process for EIA and construction permit. Construction will be started in Nov 2023 and expected to be completed in Dec 2025 which will later be registered as the condominium. The unit owner shall pay sinking fund, common fee, tax and other fees as prescribed by the Project Owner or the Condominium Juristic Person under the Condominium law.