

≡ SANSIRI



美好生活新高度  
**UPLIFT MY LIFE**  
To new heights of living





**設計新高度**  
**NEW HEIGHTS ...**  
**Of design**

現代蘭納風格與當地文化完美結合 更符合新一代的生活方式  
Modern Lanna style is perfectly combined with local culture to lead the way for the new generation.

**功能新高度**  
**NEW HEIGHTS...**  
**Of functionality**

不論是房間還是公共設施的功能性都能滿足各種生活所需  
Residences and communal facilities feature every desired amenity.

**自由新高度**  
**NEW HEIGHTS ...**  
**Of freedom**

可以遠眺素帖山 (Doi Suthep) 的空中景觀花園 星光熠熠的屋頂劇院和  
共享工作空間輕鬆的工作環境 讓您感受到前所未有的自由  
The Doi Suthep-view Sky Garden, starlit Rooftop Theatre and relaxing  
work environment of the Library Lounge are yours to roam.

**安全新高度**  
**NEW HEIGHTS...**  
**Of safety**

尚思瑞全天候安全系統 LIV-24 時刻安心  
Peace of mind is assured by LIV-24, Sansiri's ultimate security system.

住宅作為您身份的延伸  
這裡將提升生活品質新高度...

The residence as an extension of your identity  
Elevating you to new heights...

**BASE**  
**ON YOU**

# 便利新高度 NEW HEIGHTS...

Of accessibility, where your life  
has never been so convenient.



## 四通八達 進出城方便快捷

### CONNECTED TO EVERY DESTINATION

可以通過超級高速公路進入寧曼路市區 出城也很方便

With the Super Highway expressing you into city areas, such as Nimman, or out to the countryside in record time.



## 盡情享受多樣生活

### SURROUNDED BY EVERY LIFESTYLE ATTRACTION

距離尚泰百貨Central Festival 僅3分鐘車程

A mere three minutes from Central Festival.



## 生活機能配套齊全

### CLOSE TO EVERY DESIRABLE AMENITY

方便前往學校、大學和醫院

With easy access to schools, universities and hospitals.



設計理念受“現代蘭納”風格的啟發

完美融合了當地建築和精緻的手工藝品等特徵

與最新一代的生活方式 打造出真正卓越的住宅

利用不同質地的建材結合周圍自然景觀的輪廓

突出層層山巒帶來的寧靜清幽

彷彿每天都置身於大自然之中

Inspired by the “**Modern Lanna**” style, the design philosophy merges the identity and refinement of local cultural hallmarks, such as architecture and handicrafts, in perfect harmony with the latest modern lifestyle trends to create a truly outstanding residence.

Highlighting the surrounding natural wonders, from the deepest valley to the highest mountaintop, the landscape of the province is united with the very fabric of the building so residents may appreciate the exquisiteness of Chiang Mai’s environment each and every day.





## 迎賓大廳

### WELCOME LOBBY

溫暖的橘磚色調讓人想起清邁古城的城牆  
水磨石瓷磚和泰式絲綢等本土元素巧妙融合  
活潑明亮的家具搭配藝術品十分和諧  
不同的座椅設計 增添空間的趣味性  
無論坐在這裡等待朋友或是一個人安靜工作都很舒適

Drawing you in with warm shades of orange brick, reminiscent of Chiang Mai's resplendent city walls, and interspersed with indigenous raw materials, such as stone patterned tiles and rich silken fabrics, discover a harmony of vivid furniture, playful art and various seating arrangements created to suit your every mood, whether you are looking forward to meeting up with a fun group of friends or simply wish for a quiet corner to work within.



# 共享工作空間

## CO-WORKING LOUNGE

療癒的綠色調為空間帶來輕鬆悠閒的氛圍 多種座位安排可滿足團隊工作 個人工作等各種目的  
還有適合小型會議的 Meeting Pod 區域可以使用

辛勤工作後可以在附近的花園中休息片刻 放鬆身心並補充能量 以更好的狀態投入新的工作中

A Co-working space with a laid-back attitude, bathed in soothing green tones you will find easy on the eyes. Choose from a multitude of seating arrangements to suit every purpose, whether working in a group or going solo, and discover the advantages of the aptly named Meeting Pod for small meetings.

Opportune breaks from hard work are close by in garden surroundings, ready to relax and recharge you to keep calm and carry on.







# 共享花園

## CO-LIVING GARDEN

- 項目入口處的花園 綠樹成蔭的舒適環境 隨時準備迎接每一位客人的到來

A Welcome Garden at the project entrance, ready to greet every arrival with the comforting environment of shady trees.

- 綠洲般的私人花園充滿各種熱帶植物 還有獨特的涼亭 讓人聯想起悠閒的度假生活 可以在涼爽微風中感受大自然的美好

The Private Garden is a green oasis reminiscent of resort living, brimming with assorted tropical plants, trees, and a unique Pavilion, in which to lounge and appreciate natural surroundings and cool, gentle breezes.





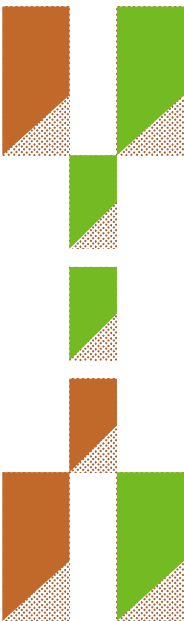


# 游泳池

## SWIMMING POOL

蜿蜒的 25 米無邊際鹽水游泳池 以山頂溪流為靈感  
沿著景觀曲線流動 可以在這盡情放鬆或鍛煉身體  
置身於城市之上 醉心於大自然的美景之中

Unwind or exercise to the max depending on your mood in the saltwater Infinity Edge Pool. Drawing inspiration from mountain top streams, the meandering 25-metre pool, flowing along the curve of the landscape, elevates you above the city amidst the beauty of nature upon every visit.





# 健身房 FITNESS

每天在設備齊全的健身房 一邊鍛鍊一邊欣賞城市風光

大大提升幸福感

振奮人心的紅色調搭配當地特色傳統花紋點綴

既符合新一代的生活方式 也保留了過去的傳統文化

Get fit and firm every day in the fully equipped fitness centre, where your well-being is heightened by the astounding view and your energy is activated by the intensity of vibrant red tones. Interspersed with patterns inspired by the local Yee Peng Lantern Festival, the Fitness Centre is the perfect answer for the lifestyles of the new generation without leaving behind traditions of the past.







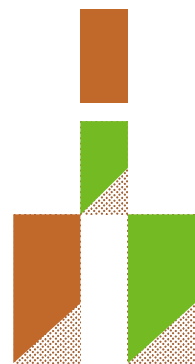
# 空中花園

## SKY GARDEN

在占地 800 平方米的空中花園  
享受從城市延伸到山巒的 360 度美景

Enjoy 360 degree views stretching from the city  
all the way to Doi Suthep, at the 800 sq.m. Rooftop garden.

- Sansiri Backyard 有機蔬菜園  
Sansiri Backyard organic vegetable farm.
- 一整天的任何時間都可以來花園進行各種活動 無論是早晨的日出瑜伽還是晚間的星空電影院  
Multi-Purpose Garden for assorted lifestyle activities at any time of day,  
from sunrise yoga in the morning to evening movies at the Rooftop Theatre.
- 戶外運動愛好者活動區 配備多功能設備 包括仰臥起坐輔助器 伏地挺身架和伸展區  
Active Zone for outdoor exercise enthusiasts, fitted-out with Multi-Function  
equipment including sit-up bar, push-up rails and stretching area.





# 項目訊息

## PROJECT INFORMATION

**地理位置：** Kaew Nawarat Road, Tambon Wat Ket, Amphoe Mueang  
**Location：** Chiang Mai, Chiang Mai

**土地面積：** 約 3,200 平方公尺 (34,444.5 平方呎)  
**Project Area：** Approximately 3,200 Sq.m. (34,444.5 Sq.ft.)

**項目類型：** 1 棟 31 層住宅大樓 (包含 1 戶商用空間)  
**Project Type：** Single 31-storey residential tower with 1 retail unit

**戶數：** 630 戶  
**Unit Number：** 630 units

戶型 Unit Type	使用面積(平方公尺) Unit Size (sq.m.)	使用面積(平方呎) Unit Size (sq.ft.)
1 房 1 衛 1 Bedroom, 1 Bathroom	29.25 - 30.25	314.8 - 325.6
1 房 1 衛 1 Bedroom, 1 Bathroom	33.00 - 34.50	355.2 - 371.4
1 房 1 衛 1 Bedroom, 1 Bathroom	40.25	433.3
1 房 1 多功能室 1 衛 1 Bedroom, 1 Multi-Purpose Room, 1 Bathroom	46.00	495.1
2 房 2 衛 2 Bedrooms, 2 Bathrooms	53.50 - 56.50	575.9 - 608.2

## 公共設施 Facilities :



接待區  
Reception Area



共享工作空間  
Work Space



健身房設備齊全  
Fully Equipped Fitness Centre



游泳池  
Swimming Pool with Rest Area



頂樓空中花園休憩區  
Rooftop Garden with Rest Area



1 樓花園休息區  
Ground Floor Garden with Rest Area



洗衣房附設烘乾機  
Laundry Centre with drying facilities



郵件收發室  
Mail Room



公共區域免費無線上網  
Wi-Fi in Welcome Lobby,  
Library, Fitness Centre  
and Rooftop facilities



電動車充電樁  
EV Charger

## 其他 Others :



24 小時警衛保全  
24-hour Security Service



24 小時錄影監控  
24-hour CCTV

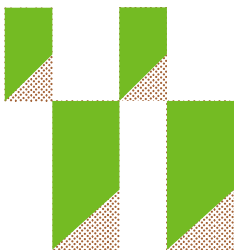
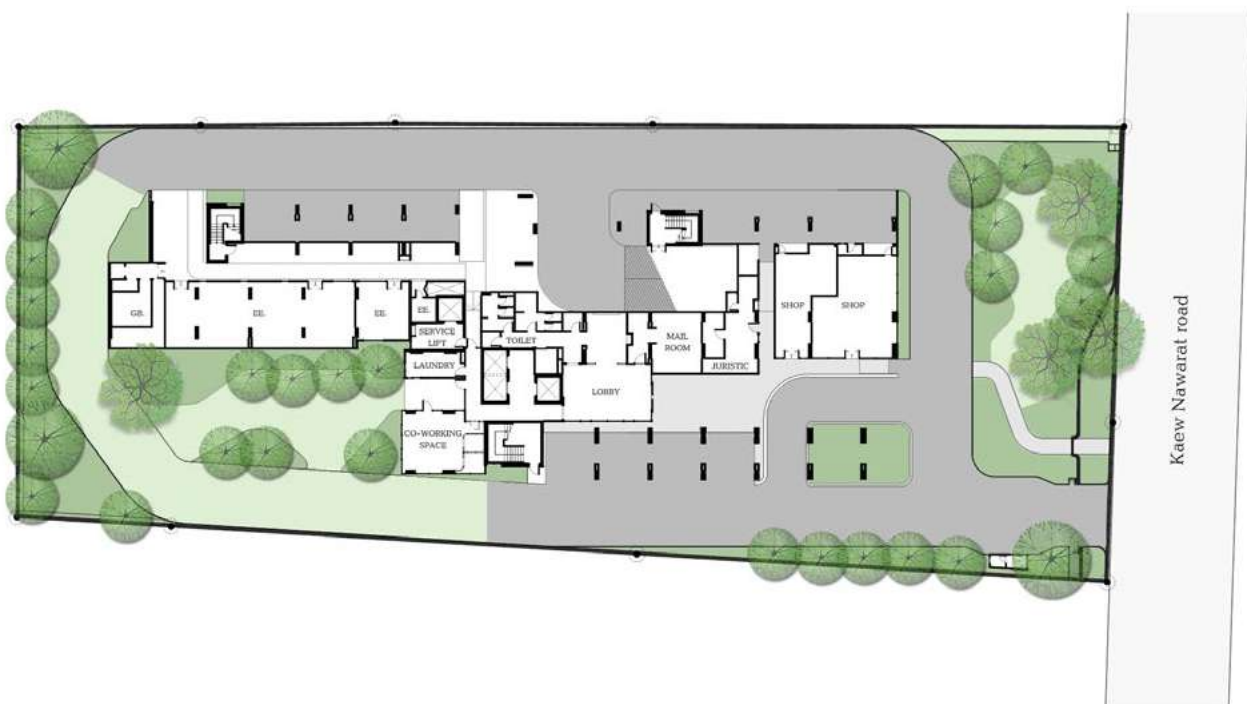


停車場  
Parking



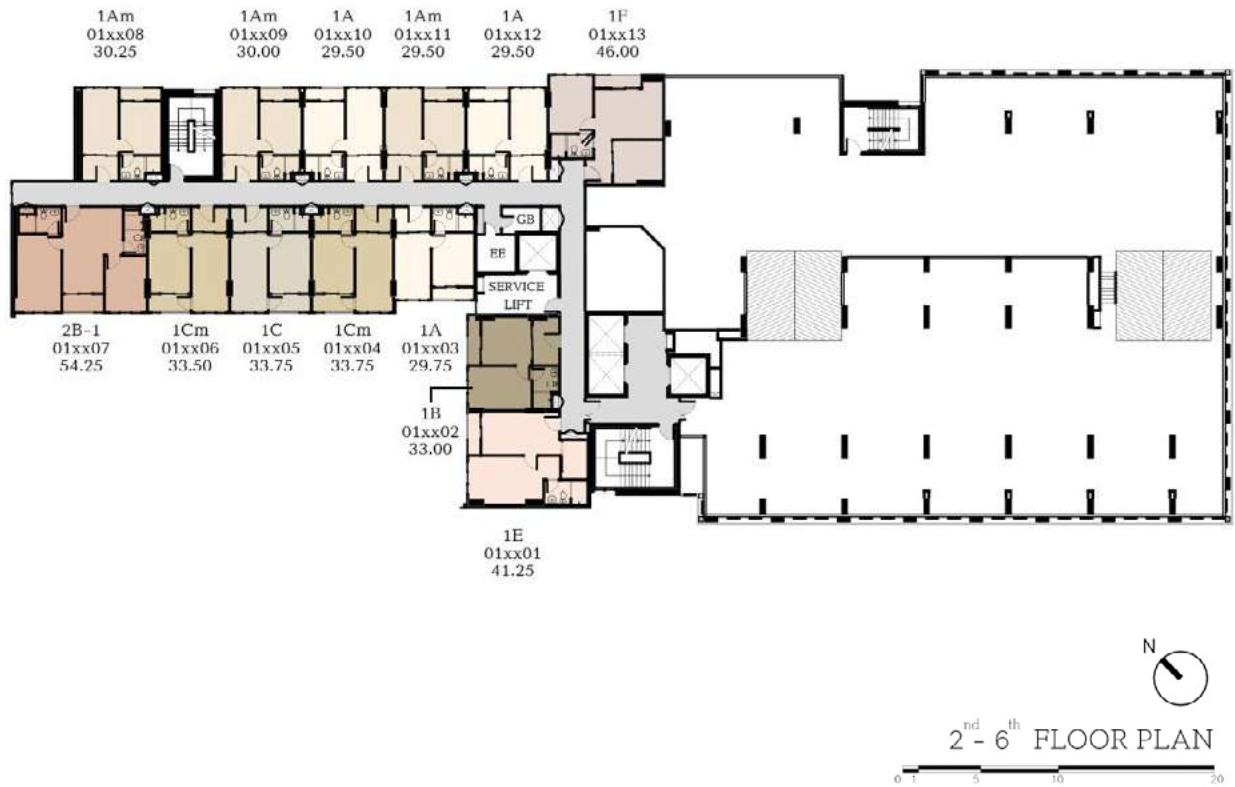
# 樓層平面圖

## FLOOR PLAN



備註：在此圖面或其他銷售文件標示之公共設施格局尺寸，依實際情況可能略有變更，但不影響整體使用功能。

Remark: Layout and area of the properties which identified herein maybe changed as deemed appropriate, but will not impact upon the use.







0 1 5 10 20



0 1 5 10 20

備註：在此圖面或其他銷售文件標示之公共設施格局尺寸，依實際情況可能略有變更，但不影響整體使用功能。

Remark: Layout and area of the properties which identified herein maybe changed as deemed appropriate, but will not impact upon the use.







備註：在此圖面或其他銷售文件標示之公共設施格局尺寸，依實際情況可能略有變更，但不影響整體使用功能。

Remark: Layout and area of the properties which identified herein maybe changed as deemed appropriate, but will not impact upon the use.

# 戶型圖

## ROOM LAYOUT





# 1A

29.25 - 29.75 SQ.M.



FLOOR 2<sup>nd</sup> - 6<sup>th</sup>



FLOOR 7<sup>th</sup> - 23<sup>rd</sup>



FLOOR 24<sup>th</sup> - 30<sup>th</sup>

# 1AM

29.25 - 30.25 SQ.M.



FLOOR 2<sup>nd</sup> - 6<sup>th</sup>



FLOOR 7<sup>th</sup> - 23<sup>rd</sup>



FLOOR 24<sup>th</sup> - 30<sup>th</sup>

備註：在此圖面或其他銷售文件標示之公共設施格局尺寸，依實際情況可能略有變更，但不影響整體使用功能。

Remark: Layout and area of the properties which identified herein maybe changed as deemed appropriate, but will not impact upon the use.



# 1B

33 SQ.M.



FLOOR 2<sup>nd</sup> - 6<sup>th</sup>



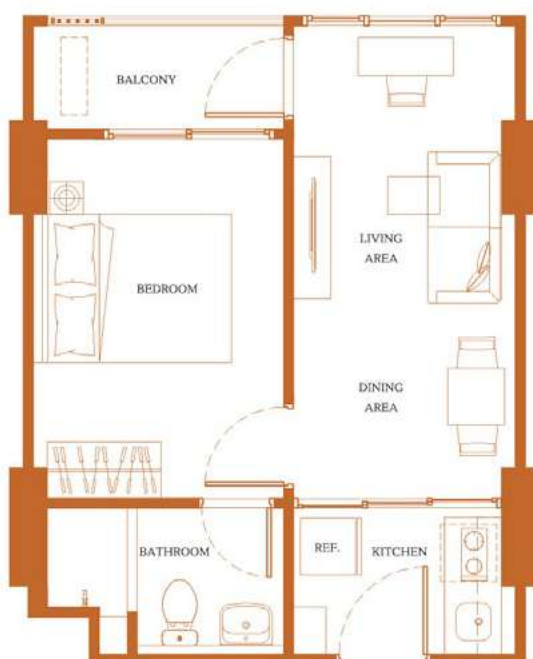
FLOOR 7<sup>th</sup> - 23<sup>rd</sup>



FLOOR 24<sup>th</sup> - 30<sup>th</sup>

# 1C

33.75 - 34.00 SQ.M.



FLOOR 2<sup>nd</sup> - 6<sup>th</sup>



FLOOR 7<sup>th</sup> - 23<sup>rd</sup>



FLOOR 24<sup>th</sup> - 30<sup>th</sup>

備註：在此圖面或其他銷售文件標示之公共設施格局尺寸，依實際情況可能略有變更，但不影響整體使用功能。

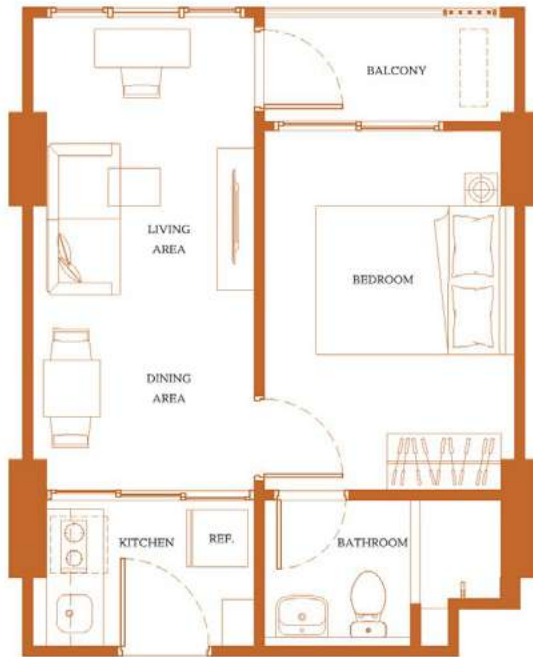
Remark: Layout and area of the properties which identified herein maybe changed as deemed appropriate, but will not impact upon the use.





# 1CM

33.5 - 34.5 SQ.M.



FLOOR 2<sup>nd</sup> - 6<sup>th</sup>



FLOOR 7<sup>th</sup> - 23<sup>rd</sup>



FLOOR 24<sup>th</sup> - 30<sup>th</sup>

# 1D

34 SQ.M.



FLOOR 7<sup>th</sup> - 23<sup>rd</sup>



FLOOR 24<sup>th</sup> - 30<sup>th</sup>



# 1E

40.25 SQ.M.



FLOOR 2<sup>nd</sup> - 6<sup>th</sup>



FLOOR 7<sup>th</sup> - 23<sup>rd</sup>



FLOOR 24<sup>th</sup> - 30<sup>th</sup>

# 1F

46 SQ.M.



FLOOR 2<sup>nd</sup> - 6<sup>th</sup>

備註：在此圖面或其他銷售文件標示之公共設施格局尺寸，依實際情況可能略有變更，但不影響整體使用功能。

Remark: Layout and area of the properties which identified herein maybe changed as deemed appropriate, but will not impact upon the use.





# 2A

50.5 SQ.M.



FLOOR 7<sup>th</sup> - 23<sup>rd</sup>



FLOOR 24<sup>th</sup> - 30<sup>th</sup>

# 2B

53.75 SQ.M.

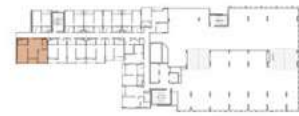


FLOOR 7<sup>th</sup> - 23<sup>rd</sup>



# 2B-1

54.25 SQ.M.



FLOOR 2<sup>nd</sup> - 6<sup>th</sup>



FLOOR 24<sup>th</sup> - 30<sup>th</sup>



FLOOR 24<sup>th</sup> - 30<sup>th</sup>

# 2C

56.5 SQ.M.



FLOOR 7<sup>th</sup> - 23<sup>rd</sup>



FLOOR 24<sup>th</sup> - 30<sup>th</sup>

備註：在此圖面或其他銷售文件標示之公共設施格局尺寸，依實際情況可能略有變更，但不影響整體使用功能。

Remark: Layout and area of the properties which identified herein maybe changed as deemed appropriate, but will not impact upon the use.







 **SANSIRI**  
sansiri.com

Project Owner: Sansiri Public Company Limited Company's registered no. 0107538000665 Head office: 59 Soi Rimklongprakanong Prakanong Nuea, Wattana, Bangkok province. Registered capital (THB): 20,343,625,722.40, Paid up capital (THB): 15,924,868,122.40 (as of date 16 December 2021). The President : Mr. Apichart Chutrakul. The Project: THE BASE Height Chiangmai, Land title deed no. 133625, 133626, 131675, 133716. approximately area 2-3-10 Rai, Located at Kaewnawarat Road, Wat Gate, Muang Ching Mai, Chiang Mai Province, as a Condominium of 31 storey(ies), 1 building(s), total of 631 unit(s), (for residential: 630 units, and for commercial: 1 unit). The Land and building have been mortgaged with Bangkok Bank Public Company Limited., in the process to submit the building permission. Construction will be started in June 2022 and expected to be completed in April 2024 which will later be registered as the condominium. The unit owner shall pay sinking fund, common fee, tax and other fees as prescribed by the Project Owner or the Condominium Juristic Person subjected to the Condominium law.